

# GSP Coordination Committee

**Coordination Committee Meeting – October 25, 2021**

Meeting will begin at 1:15 pm – thank you for joining us!

**Merced Irrigation-Urban GSA  
Merced Subbasin GSA  
Turner Island Water District GSA-1**

Image courtesy: Veronica Adrover/UC Merced

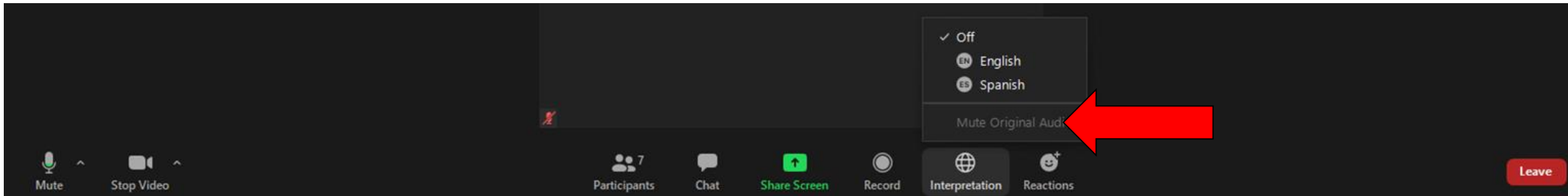
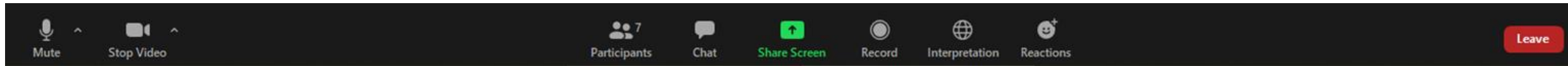


# Welcome, Instructions for Zoom

## Bienvenidos, Instrucciones para Zoom

We have two language audio channels available. English only speakers, please select English.

Si solamente habla español, debe seleccionar un canal de idioma



The meeting will have simultaneous interpreting, so you are welcome to comment in your native language.  
La junta será interpretada simultáneamente, así que le invitamos a que haga comentarios en su lenguaje nativo.

# Agenda

1. Call to Order
2. Roll Call
3. Consent Calendar
  - a) Approval of July 26, 2021 Meeting Minutes
4. Public Comment
5. Reports
  - a) Current Basin Conditions
  - b) Coordination with Neighboring Basins
  - c) GSA Reports
  - d) Data Gaps Plan Update
6. Actions
  - a) None
7. Discussion Items
  - a) Well Consistency Policy for Groundwater Well Permits
  - b) Proposal Solicitation Package (PSP) for SGMA Implementation Grants
  - c) Turlock Subbasin GSP
  - d) Insights from DWR Comment Letter on Other GSPs
8. Next Steps and Adjourn

Image courtesy: Veronica Adrover/UC Merced

# Roll Call

Representative	GSA
Hicham ElTal	Merced Irrigation-Urban GSA
Stephanie Dietz	Merced Irrigation-Urban GSA
Justin Vinson	Merced Irrigation-Urban GSA
Daniel Chavez	Merced Irrigation-Urban GSA
Ken Elwin ( <i>alternate</i> )	Merced Irrigation-Urban GSA
Mike Gallo	Merced Subbasin GSA
Nic Marchini	Merced Subbasin GSA
Eric Swenson	Merced Subbasin GSA
George Park ( <i>alternate</i> )	Merced Subbasin GSA
Kel Mitchel	Turner Island Water District GSA #1
Tim Allan ( <i>alternate</i> )	Turner Island Water District GSA #1

Image courtesy: Veronica Adrover/UC Merced



---

# Approval of Minutes

---

Image courtesy: Veronica Adrover/UC Merced



---

## Questions/Comments from Public:

If you would like to make a comment, please type the comment in the chat or raise your hand to request to be taken off mute

---

Image courtesy: Veronica Adrover/UC Merced





---

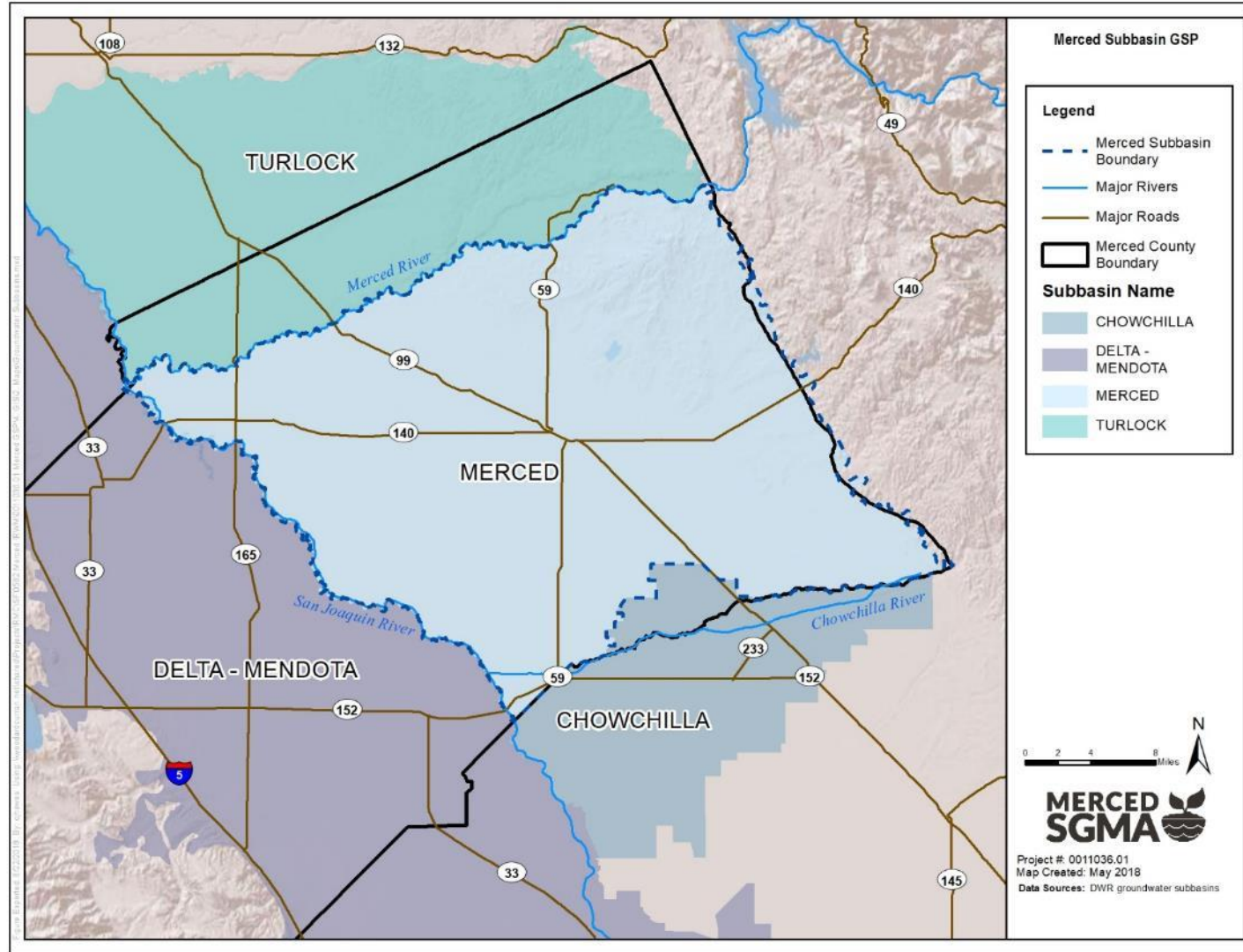
# Reports

---

Image courtesy: Veronica Adrover/UC Merced



# Coordination with Neighboring Basins





# GSA Reports

- Updates from each GSA on activities they are undertaking in their own jurisdiction:
  - Merced Subbasin GSA
  - Merced Irrigation-Urban GSA
  - Turner Island Water District GSA #1

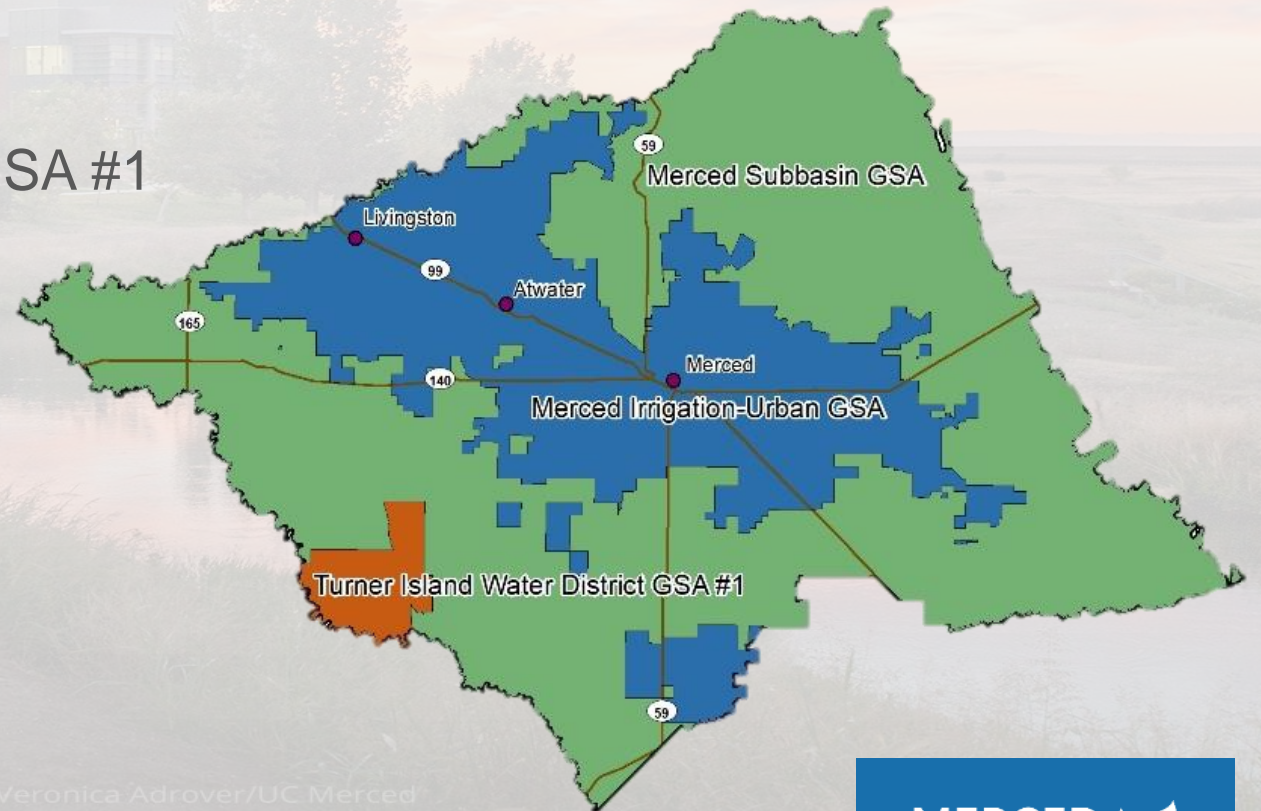


Image courtesy: Veronica Adrover/UC Merced

# Grant Funded Data Gaps Plan – Phase 2

- Basin received Prop 68 Planning Grant funding to address GSP Data Gaps
- Data Gaps Plan has been developed and will continue to be modified as new information collected
- ~\$270,000 remaining in grant funding for addressing Data Gaps to be utilized by end of 2022
- MIUGSA intending to contract on behalf of the GSAs for groundwater monitoring activities that will support Data Gaps Phase 2

## Prop 68 Grant: Addressing Merced GSP Data Gaps

### Completed

- Develop Plan to Address Data Gaps
- Stakeholder Outreach

### Upcoming

- Upgrade & incorporate existing wells into network
- Install new wells in critical locations

*Note: Bullets 3 & 4 have been corrected from what was shown during zoom meeting to include correct budget amount for grant and contracting status*



---

# Discussion Items

---

Image courtesy: Veronica Adrover/UC Merced





---

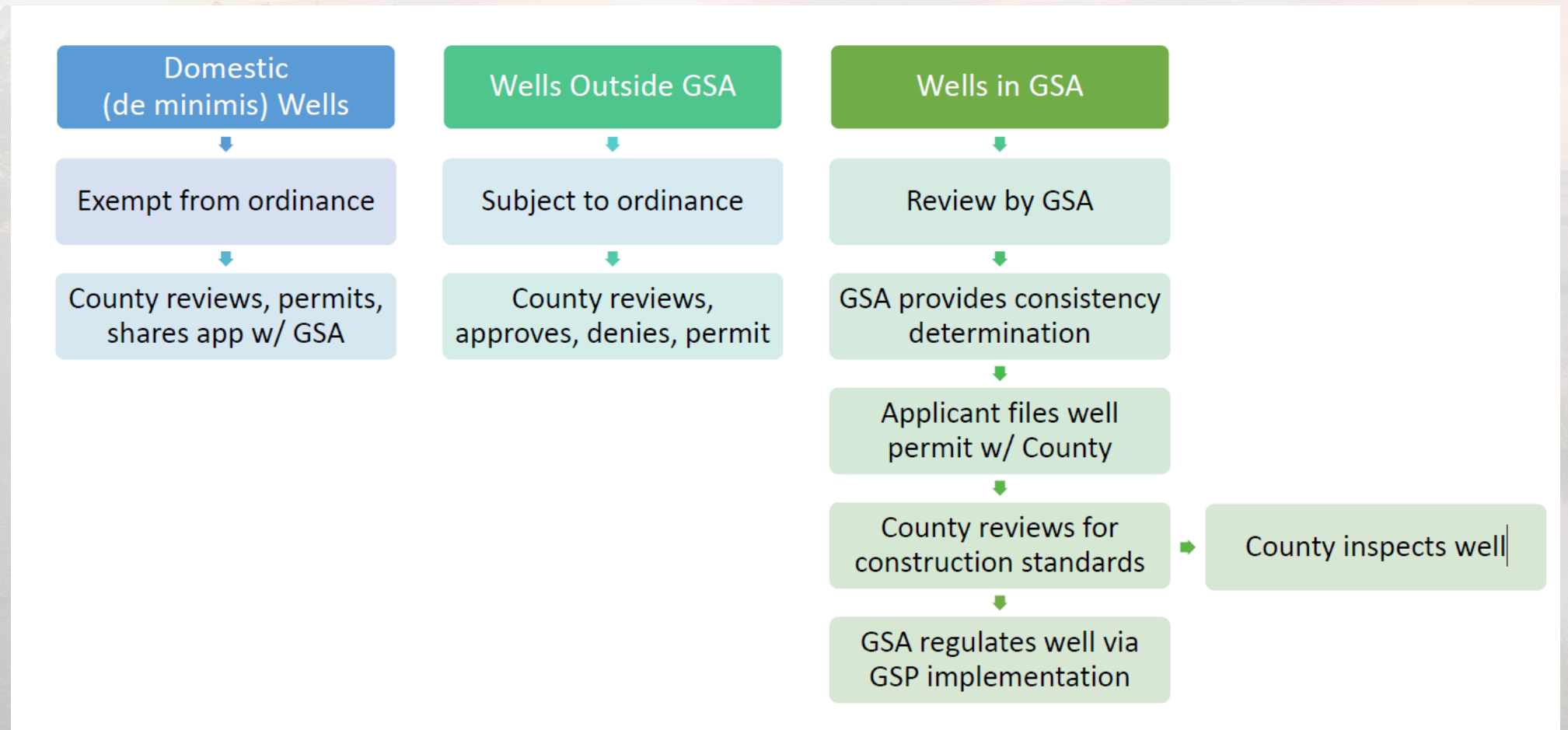
# Well Consistency Policy for Groundwater Well Permits

---

Image courtesy: Veronica Adrover/UC Merced

# Merced County Groundwater Ordinance Proposed Updates

## How it works





---

# PSP for SGMA Implementation Grants

---

Image courtesy: Veronica Adrover/UC Merced



# SGMA Implementation – Planning and Projects Grant

- **California Budget Act of 2021** (Stats. 2021, ch. 240, § 80) **and** the California Drought, Water, Parks, Climate, Coastal Protection, and Outdoor Access For All Act of 2018 (**Proposition 68**) **for projects that encourage sustainable management of groundwater resources that support SGMA and/or invest in groundwater recharge projects with surface water, stormwater, recycled water, and other conjunctive use projects.**
  - The Budget Act can also provide funding for planning activities that support SGMA implementation.

Image courtesy: Veronica Adrover/UC Merced

# SGMA Implementation – Planning and Projects Grant Funding

- The Budget Act made \$171M available for grant awards, **\$152M for COD basins.**
  - Also authorizes Legislature to appropriate \$60M in FY 2022/2023 and \$60M in FY 2023-2024 (\$114M after DWR admin costs)
- \$71.5M available through Prop 68 for drought and groundwater investments (\$9.5M reserved for projects within and solely benefitting SDACs)
- \$114M in future budgets, remaining \$19M in FY 2021/2022, and remaining \$71.5M in Prop 68 grant funds will be combined together in a single funding round.

Image courtesy: Veronica Adrover/UC Merced



# SGMA Implementation – Planning and Projects Grant (Round 1)

- Up to \$152M is available for projects in eligible COD groundwater basins.
  - **Total amount will be split evenly to provide \$7.6M per COD basin.**
  - Minimum of \$3.7M shall be used toward:
    - Geophysical investigations (AEM);
    - Early implementation of existing regional flood management plans that incorporate groundwater recharge; or
    - Projects that would complement efforts of a local GSP, that provide for floodplain expansion to benefit groundwater recharge or habitat (e.g., basin recharge using peak flows from a river, creek, or stream).
- **Round 1 is not competitive between basins. Round 2 is open to all medium and high priority basins not receiving money in Round 1.**

Image courtesy: Veronica Adrover/UC Merced

---

# Eligible Project Activities, Tasks, and/or components:

---

- Filling data gaps in a GSP(s) or Alternative
- Project development activities (e.g., feasibility studies, design, permits, environmental documents)
- Long-term planning studies
- Technical and planning assistance for Underrepresented Communities
- Interested party outreach and engagement
- Vulnerability or risk assessments
- Evaluation of groundwater management needs
- Impact studies on domestic and de minimis groundwater well users
- Annual reporting for GSPs and Alternatives
- Identifying and proper destruction of abandoned wells
- Identifying of recharge location(s)
- Soil carbon enhancement and Healthy Soil Initiative activities
- Native Yield studies
- Coordination activities with adjacent GSA(s)

Image courtesy: Veronica Adrover/UC Merced

# Eligible Project Activities, Tasks, and/or components:

- Instrumentation for monitoring wells (e.g., pressure transducers)
- Pilot or demonstration projects meeting the purpose of SB-170 and Proposition 68
- Installation of meters on groundwater production and agricultural wells
- Installation of monitoring well(s)
- Connection of communities to a municipal water supply (except laterals on private land)
- Groundwater recharge projects with surface water, stormwater, recycled water, and other conjunctive use projects
- Groundwater contaminant remediation or prevention projects for groundwater that serves as a source of drinking water
- Construction, rehabilitation, or expansion of conveyance facilities for groundwater recharge projects
- Wastewater treatment and water recycling facility upgrades for groundwater recharge project sources
- Stormwater and runoff capture projects that support groundwater recharge
- Groundwater recharge facility expansion
- Groundwater recharge projects that address groundwater dependent ecosystems (GDEs)
- Projects and programs that support water supply reliability, water conservation, water use efficiency and water banking, exchange, and reclamation
- Planning, design, and environmental documentation only as a task of a Project or Component of an overall project (not a standalone task).

Image courtesy: Veronica Adrover/UC Merced

# SGMA Implementation – Planning and Projects Grant (Round 1)

- Administrative requirements for \$7.6M
  - Comply with eligibility requirements in PSP and 2021 Grant Guidelines
  - Prepare Spending Plan by 01/31/2022
    - Self-evaluate project list, and submit as backup documentation to Spending Plan.
    - DWR recommends project review committee responsible for self-evaluation
      - Develop an un-biased review process predetermined by the GSAs. Scoring criteria is provided by DWR.
    - After submission of Spending Plan, DWR will contact applicant to review Spending Plan, check eligibility of the Project(s), and to develop a draft agreement.
  - All work, including final invoicing and reporting and retention invoice, must be completed on or before June 30, 2025.
  - Only one application will be accepted per basin. Applicants who apply on behalf of a GSA(s) are required to obtain and submit a letter of support from each GSA they represent.

Image courtesy: Veronica Adrover/UC Merced

# Tentative Grant Program Schedule

<b>Program Schedule and Key Dates</b>	
<b><i>Milestone or Activity</i></b>	<b><i>Tentative Schedule</i></b>
SGM Grant Program's Draft Guidelines and PSP Posted for Public Comment	Oct 13-Nov 29, 2021
SGM Grant Program's Draft Guidelines and PSP Public Workshop, Online Only	Nov 16, 2021, 2-4pm
SGM Grant Program's Final Guidelines and PSP Published	December 2021
COD Basin - Round 1 Grant Solicitation Opens	December 2021
COD Basin - Round 1 Grant Application Workshop	Mid December 2021
COD Basin - Round 1 Grant Solicitation Closes	January 2022
Final Awards	March 2022
Execute Agreements	April 2022
Medium & High Priority- Round 2 Grant Solicitation Opens	Fall/Winter 2022
Draft Award List Posted for Public Review	Spring 2023
Final Award List Posted	Summer 2023
Execute Agreements	Summer 2023

Image courtesy: Veronica Adrover/UC Merced

---

# Potential Next Steps:

---

- GSA representatives to attend Workshop on November 16, 2021
- Provide comment to DWR
- Consider:
  - Identifying projects,
  - Selecting representatives to score projects,
  - Starting preparation of Spending Plan

Image courtesy: Veronica Adrover/UC Merced



---

# Turlock Subbasin GSP

---

Image courtesy: Veronica Adrover/UC Merced



# Turlock Groundwater Subbasin

- High Priority, and NOT Critically Overdrafted.
- GSP due January 31, 2022.
- 6 of 9 Draft Chapters are Publicly Available for review.
  - Ch 1 – Admin Information
  - Ch 2 – Plan Area
  - Ch 4 – Basin Setting
  - Ch 5 – Water Budgets
  - **Ch 6 – SMC**
  - **Ch 7 – Monitoring Networks**
- Remaining chapters:
  - Ch 3 – Notice and Communication
  - **Ch 8 – P & MA**
  - Ch 9 – References

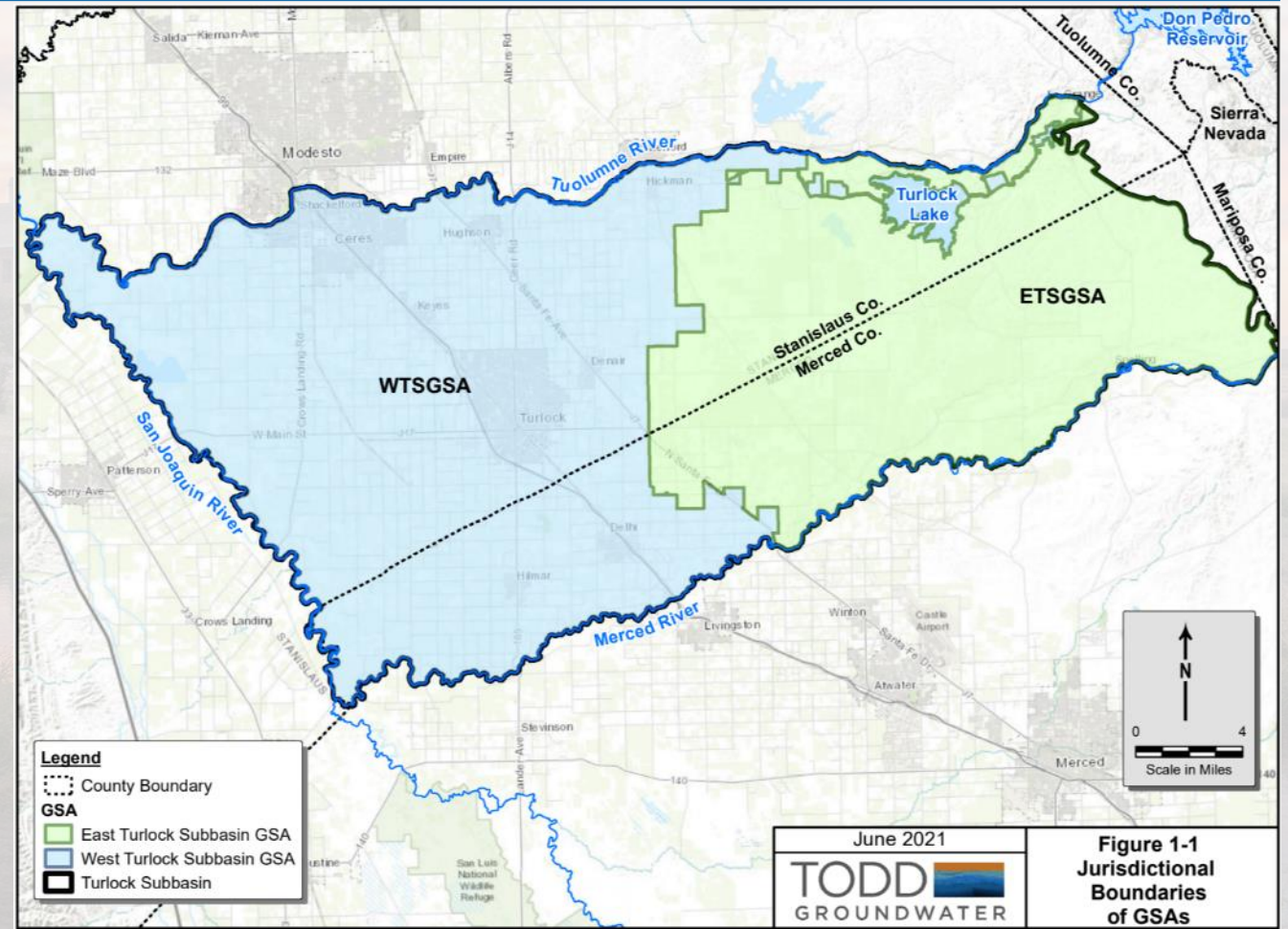


Image courtesy: Veronica Adrover/UC Merced



# Sustainable Management Criteria – Undesirable Results

Sustainability Indicator	Merced	Turlock
<b>Chronic Lowering of Groundwater Levels</b>	Greater than 25% of representative wells fall below MT in consecutive wet, above normal, or below normal years.	For each principal aquifer, at least 33% of representative monitoring wells exceeds MT in 3 consecutive Fall semi-annual monitoring events.
<b>Reduction of GW in Storage</b>	N/A	For each principal aquifer, at least 33% of representative monitoring wells exceeds MT in 3 consecutive Fall semi-annual monitoring events.
<b>Degraded Water Quality</b>	At least 25% representative wells exceed MT for 2 consecutive years	New exceedance of an MT is observed in a potable water supply well in the representative monitoring network that results in a well owners increase in operational costs and is caused by GSA management activities...
<b>Seawater Intrusion</b>	N/A	N/A
<b>Land Subsidence</b>	Exceedance of MT at 3 or more representative sites for 2 consecutive years	Western Upper and Lower Principal aquifers when 33% of representative monitoring wells exceed the MT in three consecutive Spring monitoring events.  Eastern Principal Aquifer when 33% of representative monitoring wells exceed the MT in three consecutive Fall monitoring events.
<b>Interconnected Surface Water</b>	"Groundwater levels used as a proxy for this sustainability indicator"	For each river when 50% of the representative monitoring sites for that river exceed the MT in two consecutive Fall monitoring events.

Image courtesy: Veronica Adrover/UC Merced

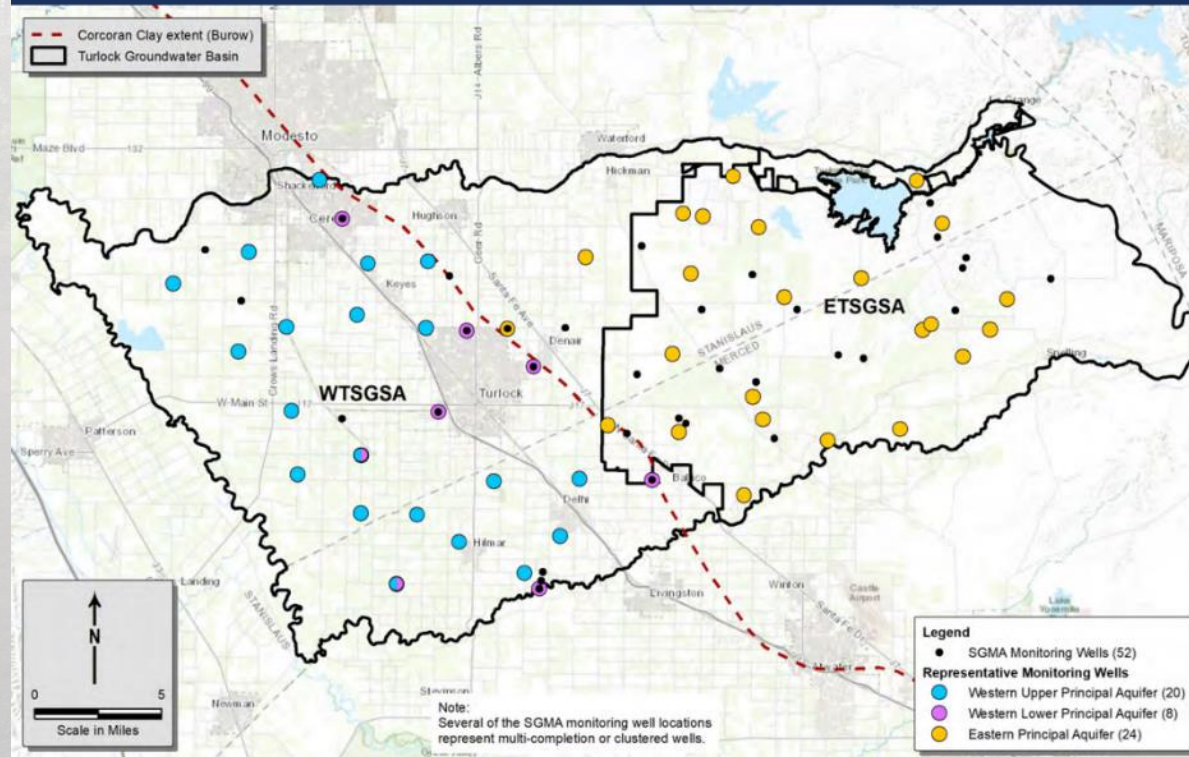
# Sustainable Management Criteria – Minimum Thresholds

Sustainability Indicator	Merced	Turlock
<b>Chronic Lowering of Groundwater Levels</b>	Depth of shallowest well in a 2-mile radius of each representative well or minimum pre-January 1, 2015 elevation	Fall 2015 groundwater levels at each representative monitoring site in each Principal Aquifer.
<b>Reduction of GW in Storage</b>	N/A	Fall 2015 groundwater levels; linked to sustainable yield volume
<b>Degraded Water Quality</b>	1,000 mg/L TDS	<ul style="list-style-type: none"> <li>• Nitrate (as N) – 10 mg/L</li> <li>• Arsenic – 10 µg/L</li> <li>• Uranium – 20 pCi/L</li> <li>• Total dissolved solids (TDS) – 500 mg/L</li> <li>• 1,2,3-Trichloropropane (1,2,3-TCP) – 0.005 µg/L</li> <li>• Tetrachloroethene (PCE) – 5 µg/L</li> </ul>
<b>Seawater Intrusion</b>	N/A	N/A
<b>Land Subsidence</b>	-0.75 ft/year	Fall 2015 or the top of the Corcoran Clay (where present), whichever is shallower, at each representative monitoring site for each principal aquifer.
<b>Interconnected Surface Water</b>	"Groundwater levels used as a proxy for this sustainability indicator"	<p>Tuolumne/SJ rivers: Fall 2015 GW levels</p> <p>Merced River: Spring 2014 GW levels</p>

Image courtesy: Veronica Adrover/UC Merced

# Monitoring Network Summary

## MONITORING NETWORK SUMMARY

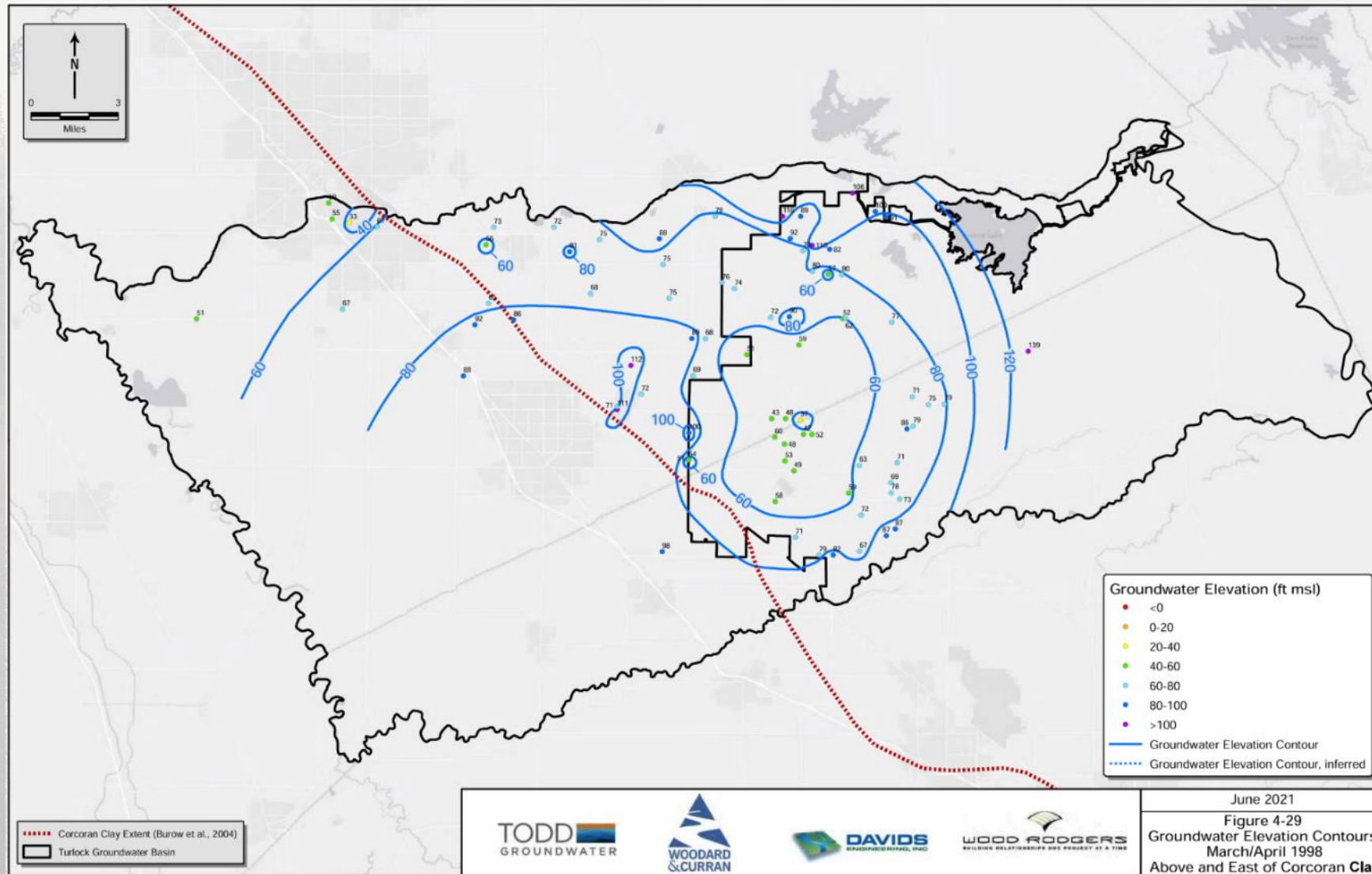


- 52 total representative monitoring wells
- 52 additional SGMA wells for tracking and contouring water levels basin-wide

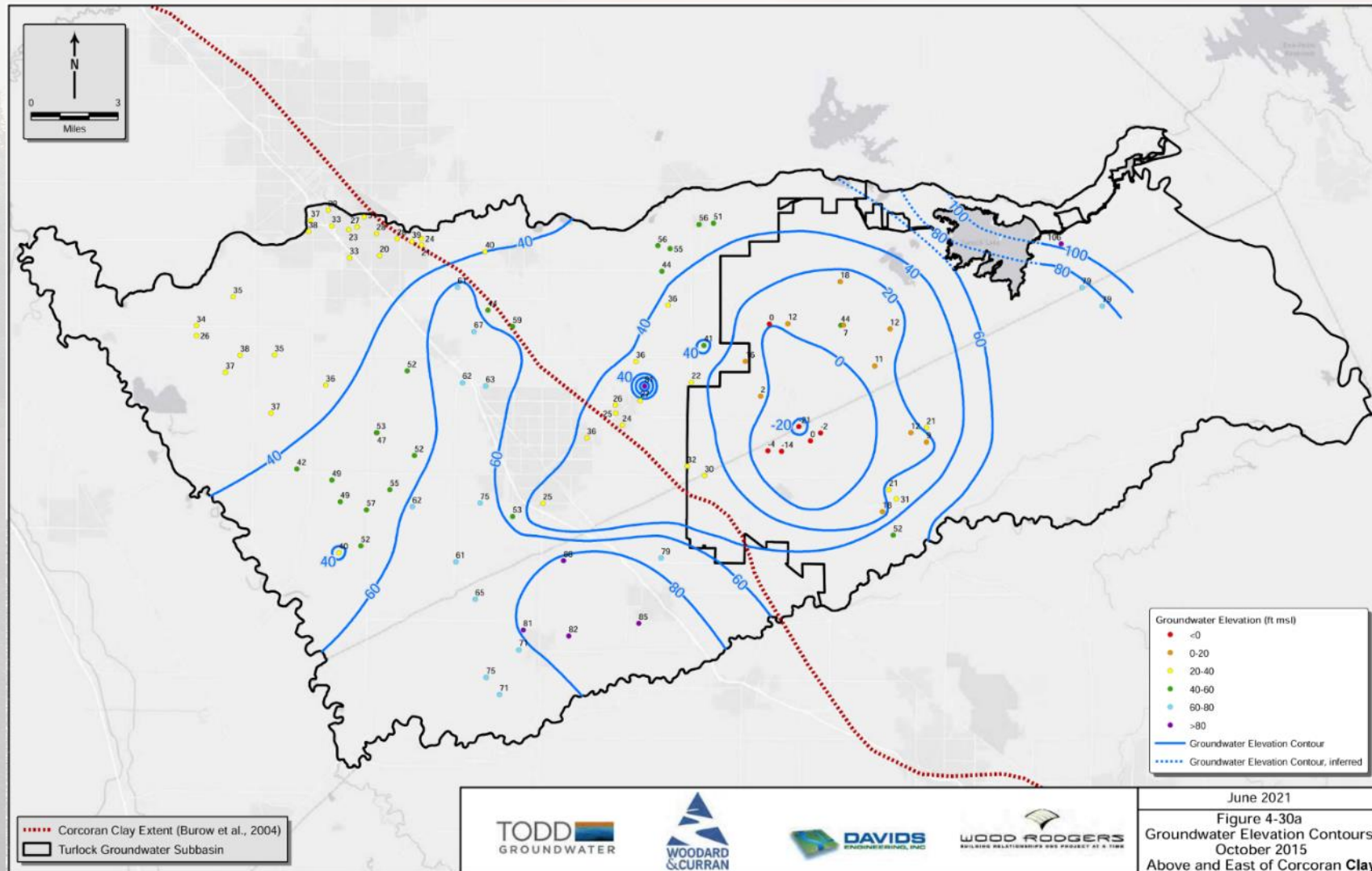
TODD  
GROUNDWATER  
DRAFT

Image courtesy: Veronica Adrover/UC Merced

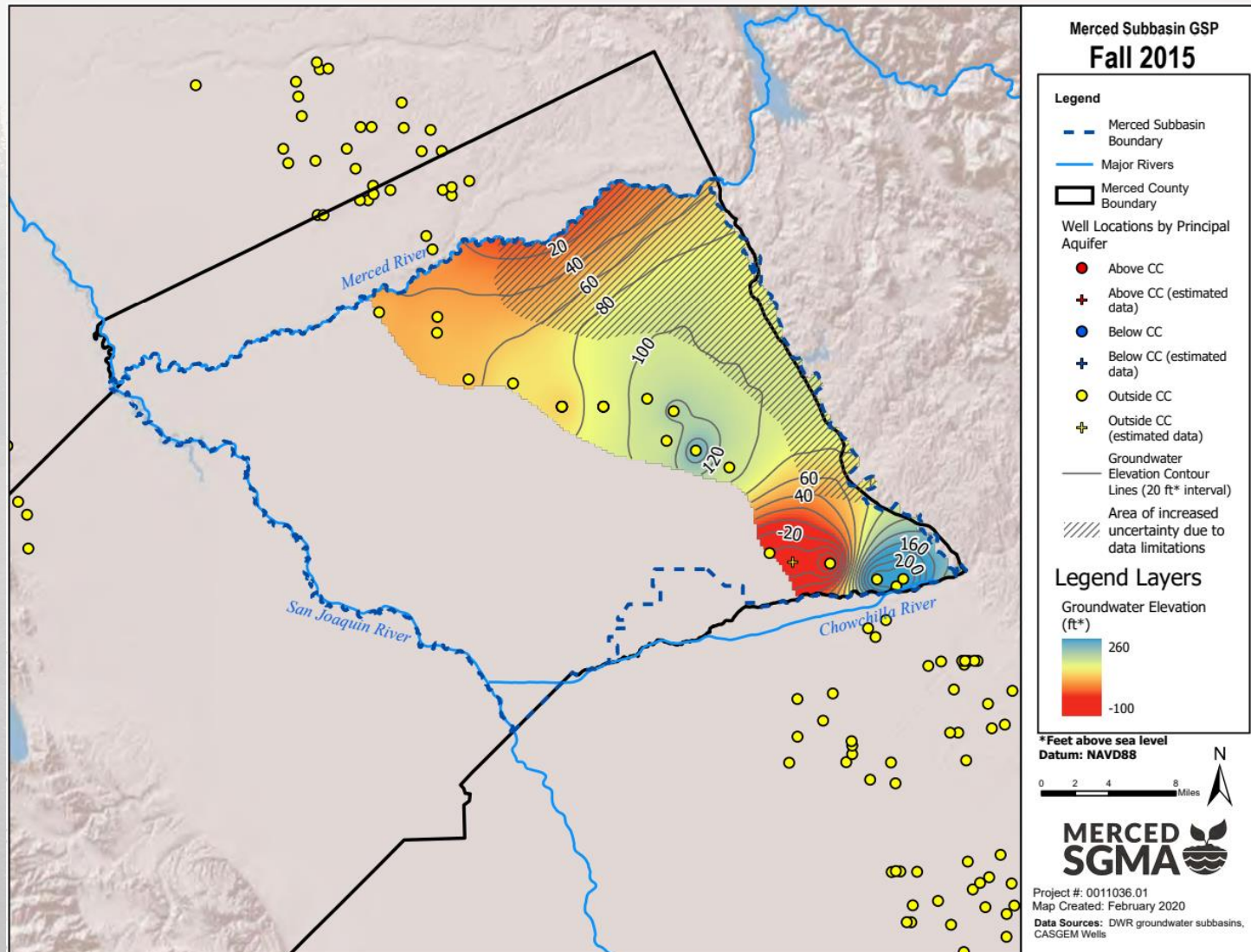
# Groundwater Elevations – Above and Outside CC – Spring 1998



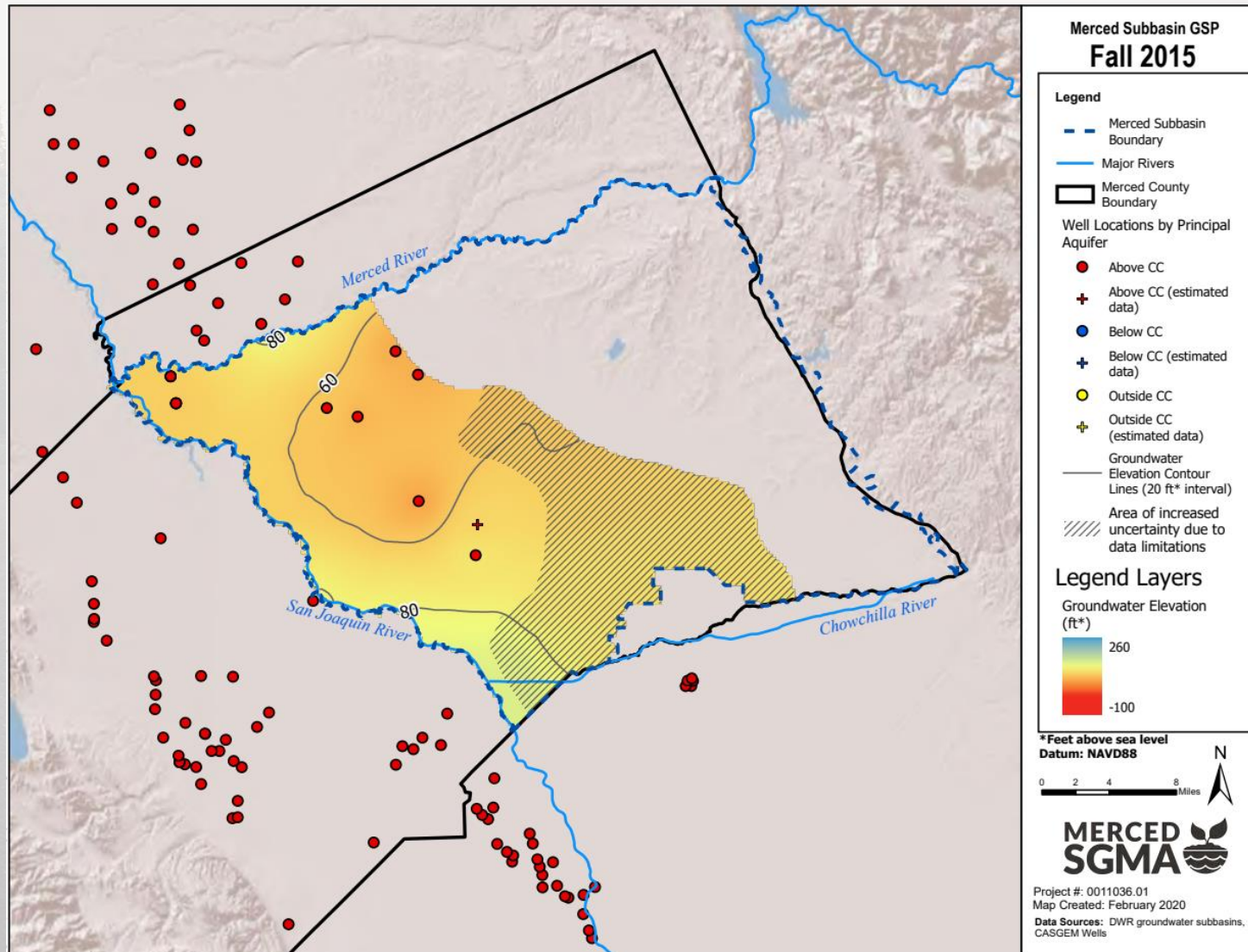
# Groundwater Elevations – Above and Outside CC – Fall 2015



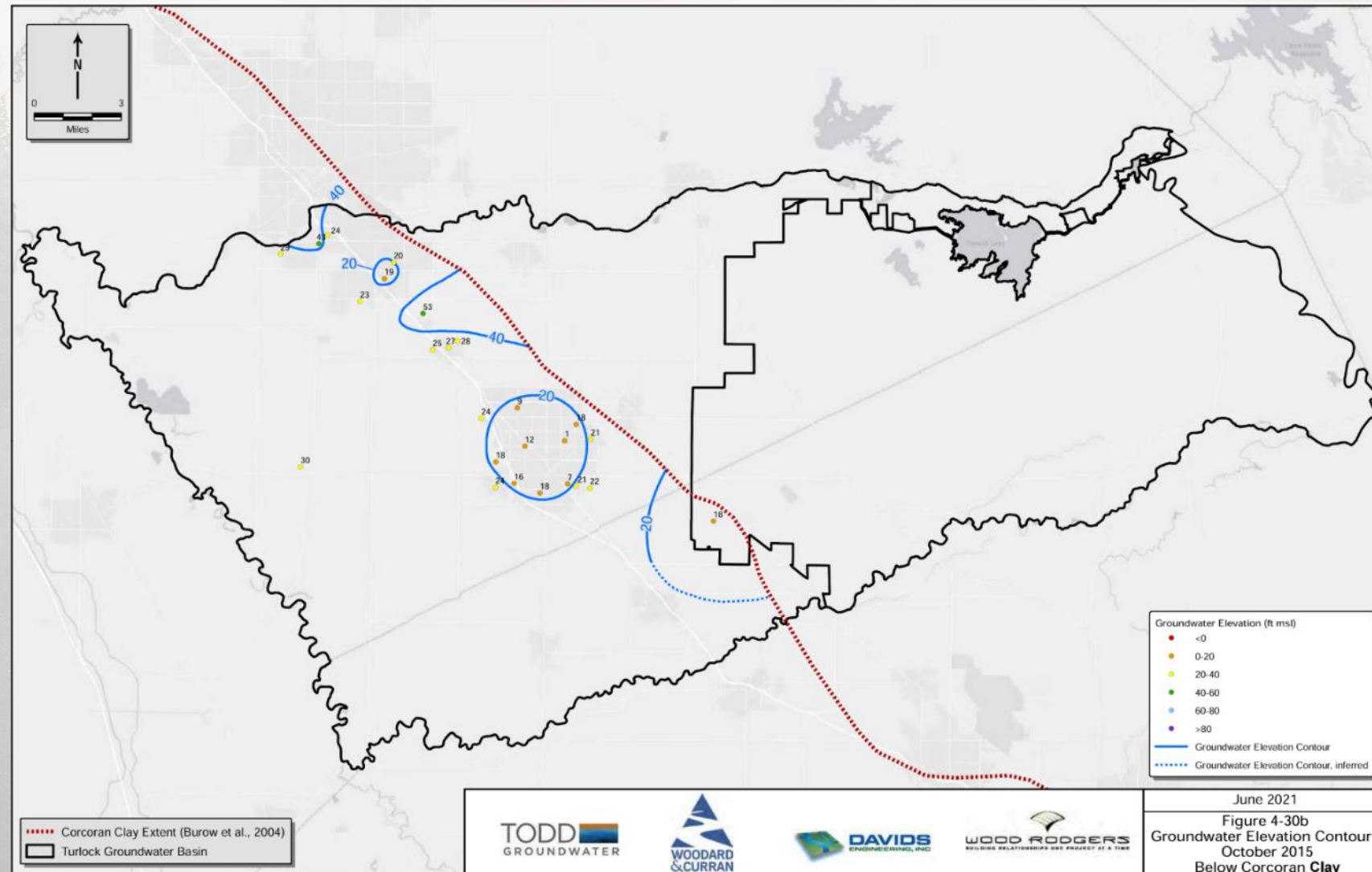
# Groundwater Elevations – Outside CC – Fall 2015



# Groundwater Elevations – Above CC – Fall 2015

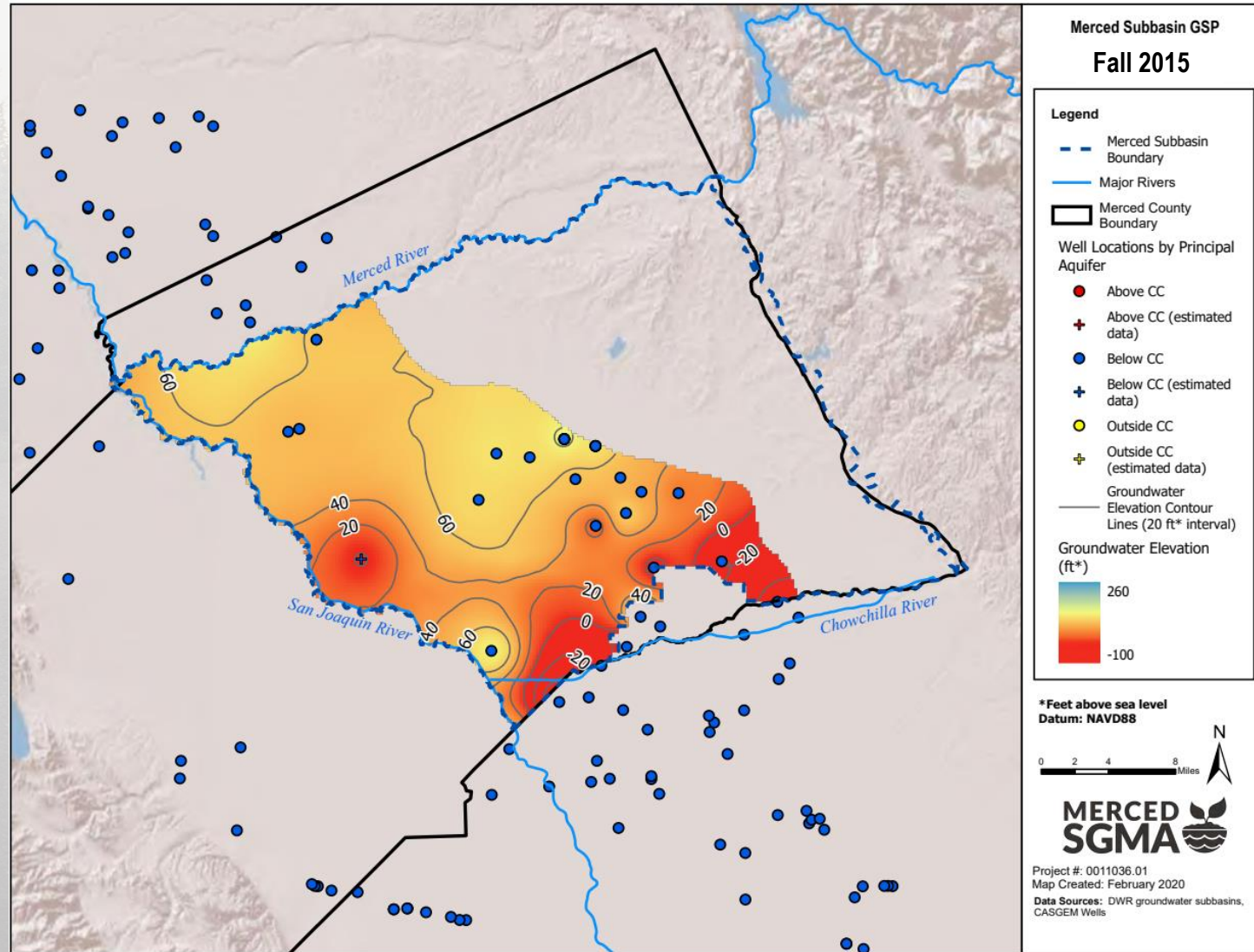


# Groundwater Elevations – Below CC – Fall 2015





# Groundwater Elevations – Below CC – Fall 2015



# Water Budget Diagram (Historical Conditions)

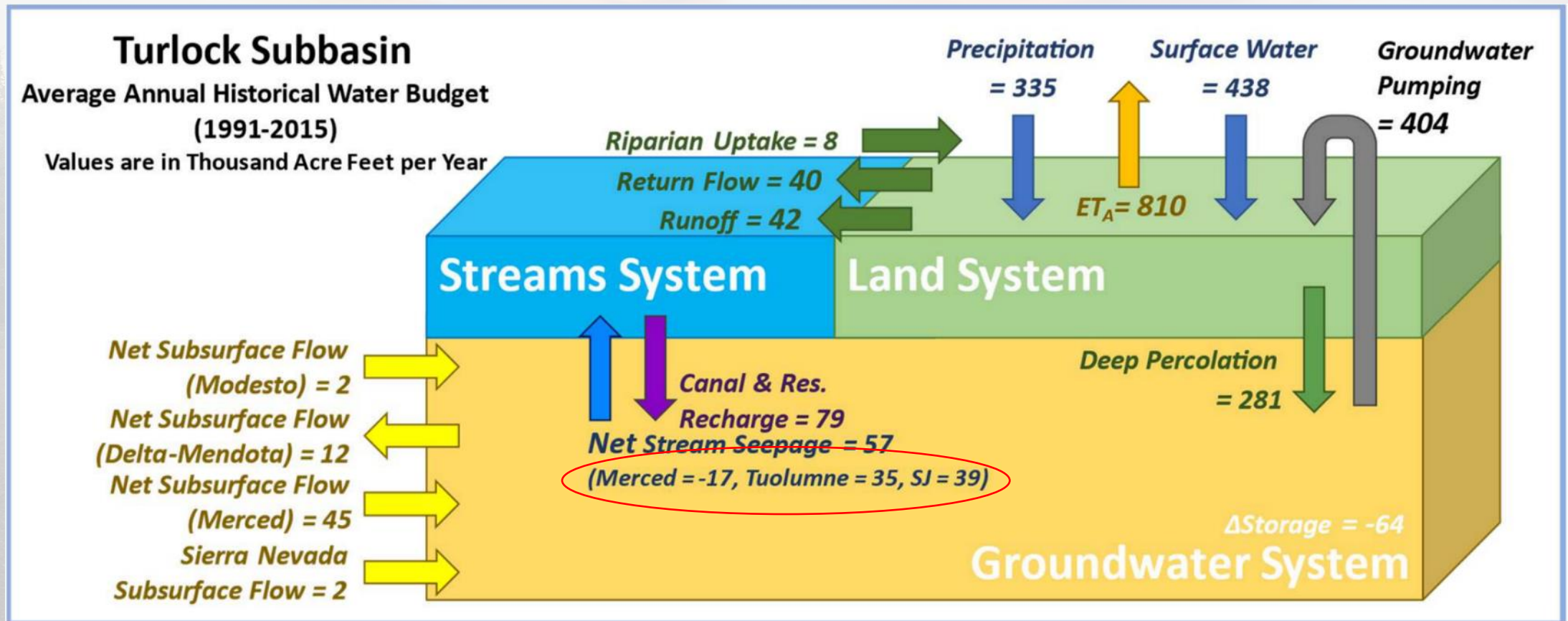
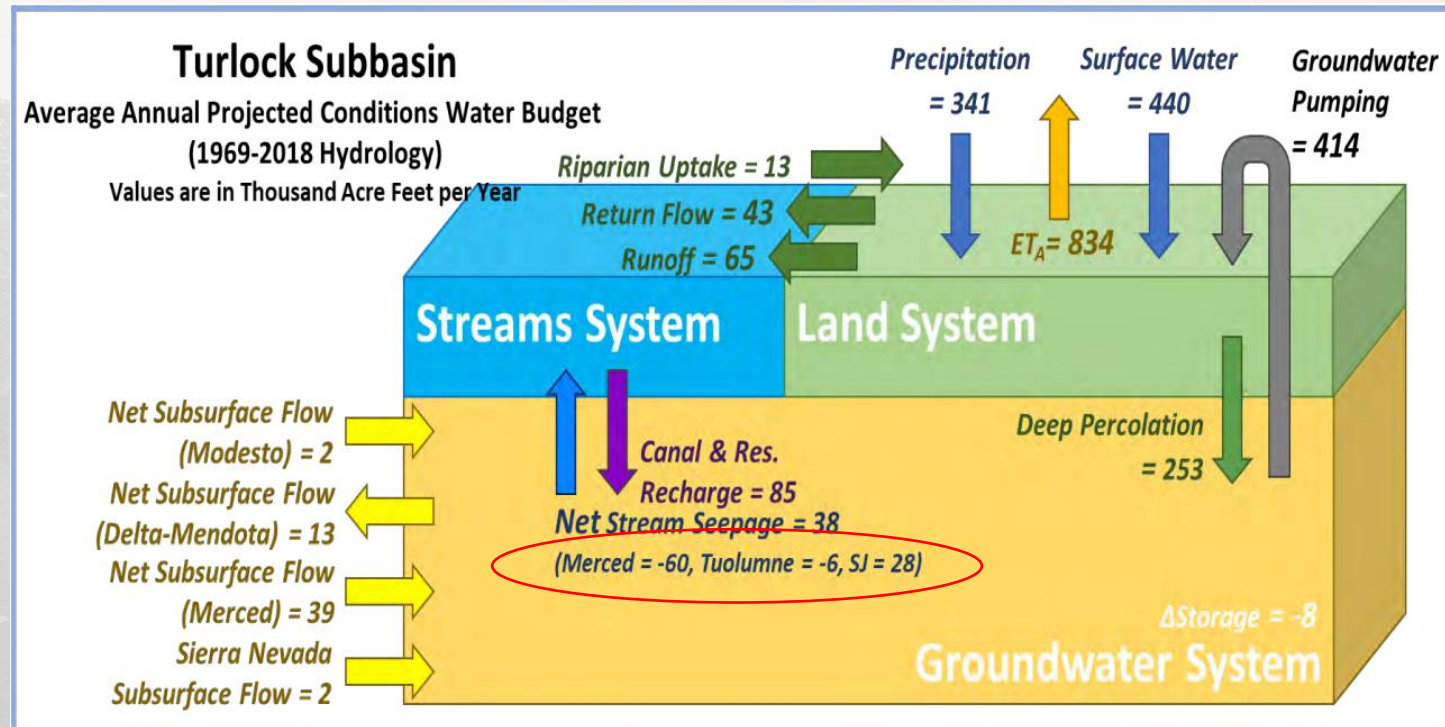


Image courtesy: Veronica Adrover/UC Merced

# Water Budget Diagram (Projected Conditions)



- Monthly inflows and outflows over 50 years
- Historical overdraft of -63,900 AFY
- Projected future overdraft of -8,000 AFY
- Improvement in overdraft results from increase in streamflow depletion – an undesirable result.

**Most of the projected overdraft and increase in streamflow depletion are associated with areas using groundwater as the sole water supply.**

---

# Opportunities to Comment

---

- Chapters for Sustainable Management Criteria and Monitoring Network available for public review and comment until November 19, 2021.
- 60 day public comment period after GSP posted by DWR (submittal due on or before January 31, 2022).

Image courtesy: Veronica Adrover/UC Merced



---

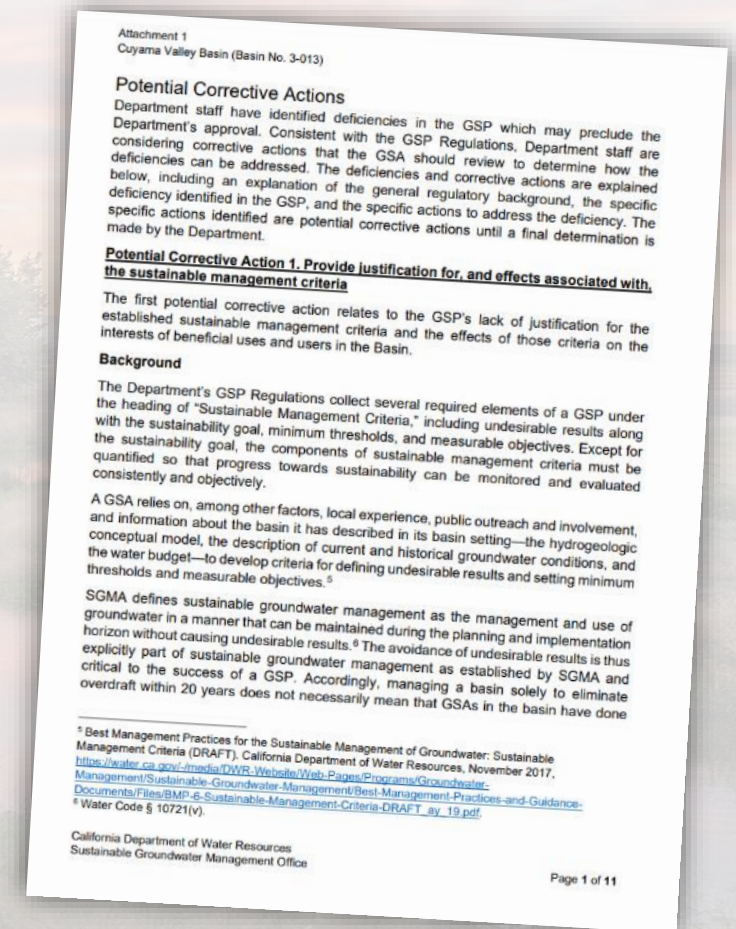
# Insights from DWR Comment Letter on Other GSPs

---

Image courtesy: Veronica Adrover/UC Merced

# Insights from DWR Comment to Other GSPs

- DWR to date has only officially completed review and approved 2 GSPs (Santa Cruz and Salinas)
- DWR says they will meet the regulatory deadline to complete reviews by January 2022.
- Expect DWR will ask for corrective actions and GSAs will have 180 days to respond
- DWR provided comments on two GSPs with potential relevance to Central Valley GSPs:
  - Better justification for how minimum thresholds are consistent with avoiding undesirable results
  - Concern about use of groundwater levels as a proxy for Interconnected Surface Water sustainability criteria
  - Request to add sustainable management criteria and a monitoring network for nitrates and arsenic (the Cuyama GSP only has criteria for salinity)



# State Water Resources Control Board Comment Letter

- SWRCB submitted a comment letter on the Merced GSP to DWR 8/23/21
- Comment Topics included:
  - Groundwater Levels and Potential Drinking Water Impacts
  - Groundwater Quality
  - Depletions of Interconnected Surface Water
  - Water Budget
  - Projects and Management Actions
  - Projects Reliant on New or Amended Water Rights
  - Engagement

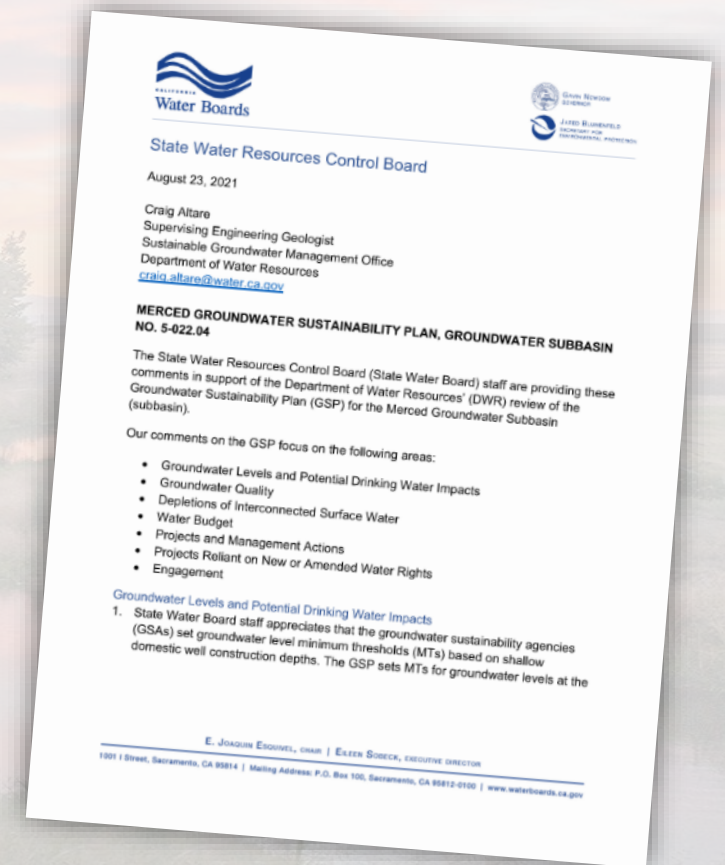


Image courtesy: Veronica Adrover/UC Merced



---

## Next Steps

---

Image courtesy: Veronica Adrover/UC Merced





---

# What's coming up next?

---

- Stakeholder Advisory Committee meeting November 8, 2021
- Adjourn to next meeting: TBD in January 2022

Image courtesy: Veronica Adrover/UC Merced

---

# GSP Coordination Committee

---

**Coordination Committee Meeting – July 26, 2021**

**Merced Irrigation-Urban GSA  
Merced Subbasin GSA  
Turner Island Water District GSA-1**

Image courtesy: Veronica Adrover/UC Merced

