

---

# GSP Coordination Committee

---

Coordination Committee Meeting – November 2, 2020

Merced Irrigation-Urban GSA  
Merced Subbasin GSA  
Turner Island Water District GSA-1

Image courtesy: Veronica Adrover/UC Merced

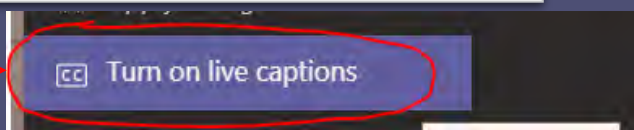
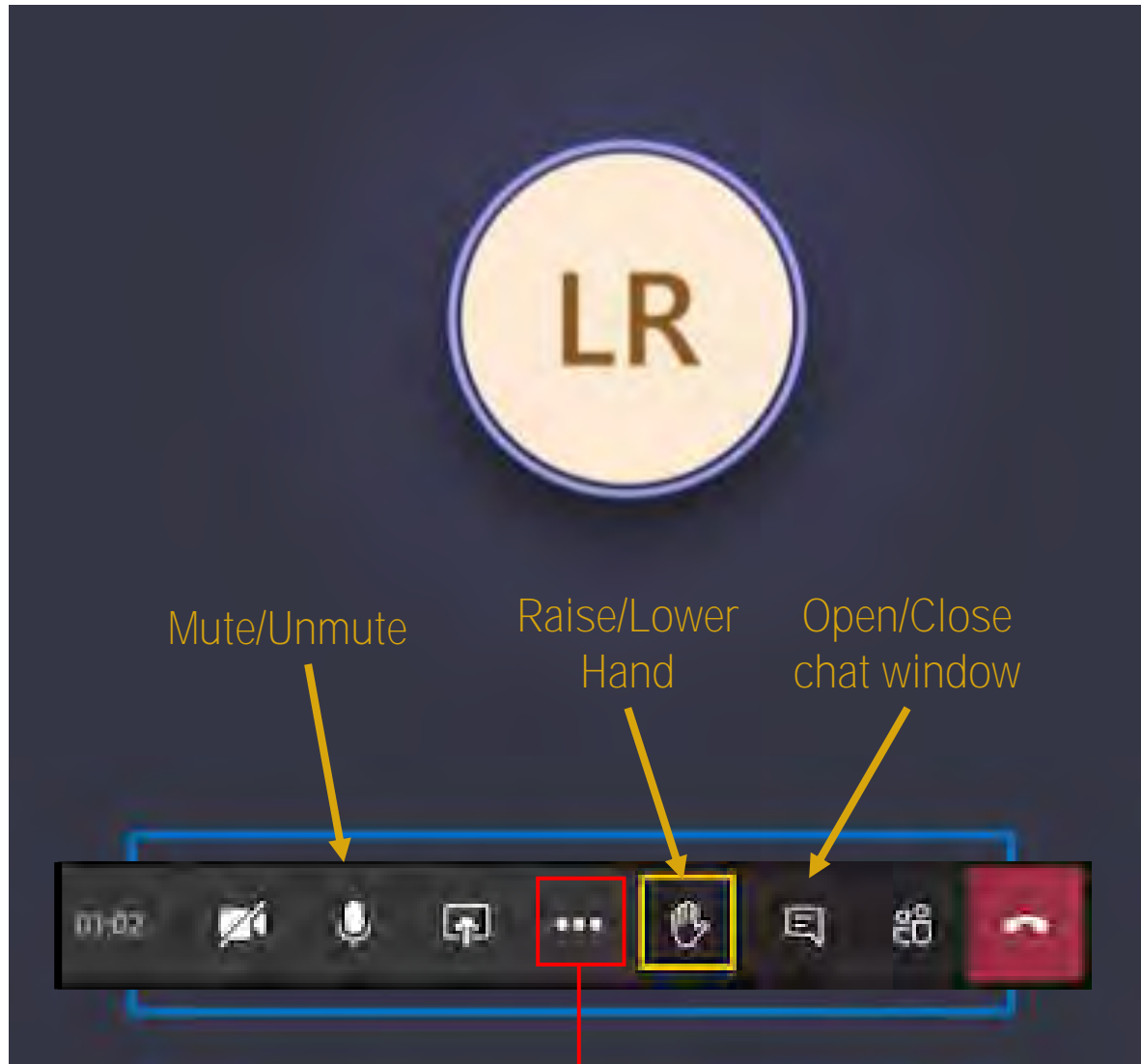


# Using Microsoft Teams

- All: Please stay on mute unless speaking

- Members of Public: Use Chat or Raise Hand feature to participate during Public Comment period

- Live Captions available in English



---

# Agenda

---

1. Call to order
2. Roll Call
3. Consent Calendar
  - a) Approval of October 28, 2019 Meeting Minutes
4. Reports
  - a) Update on Submittal of Groundwater Sustainability Plan and First Annual Report
  - b) Severely Disadvantaged Communities Grant Status Update
  - c) Coordination with Neighboring Basins
  - d) GSA Reports

Image courtesy: Veronica Adrover/UC Merced

---

# Agenda

---

## 5. Actions

- a) Water Level and Water Quality Monitoring Networks
- b) Proposition 68 Planning and Implementation Grants
- c) DWR Technical Support Services General Application

## 6. Public Comment

## 7. Informational Items

- a) Domestic Well Inventory
- b) Coordinated Water Right Application
- c) Other Informational Items

## 8. Next steps and adjourn

Image courtesy: Veronica Adrover/UC Merced



---

# Approval of Minutes

---

Image courtesy: Veronica Adrover/UC Merced



---

# Reports

---

Image courtesy: Veronica Adrover/UC Merced

# The GSP and First Annual Report were submitted on time in early 2020

- Merced Subbasin GSP
  - Adopted by all 3 GSAs and submitted to DWR on **January 28, 2020**
  - DWR conducted “completeness” checks in February 2020 – deemed Merced GSP “complete”
  - DWR now in 2-yr review of plans and expects GSAs to start implementation in interim
- First Annual Report
  - Submitted to DWR **March 31, 2020**
  - Covered water years 2016-2019
  - **Next Annual Report due April 1, 2021**

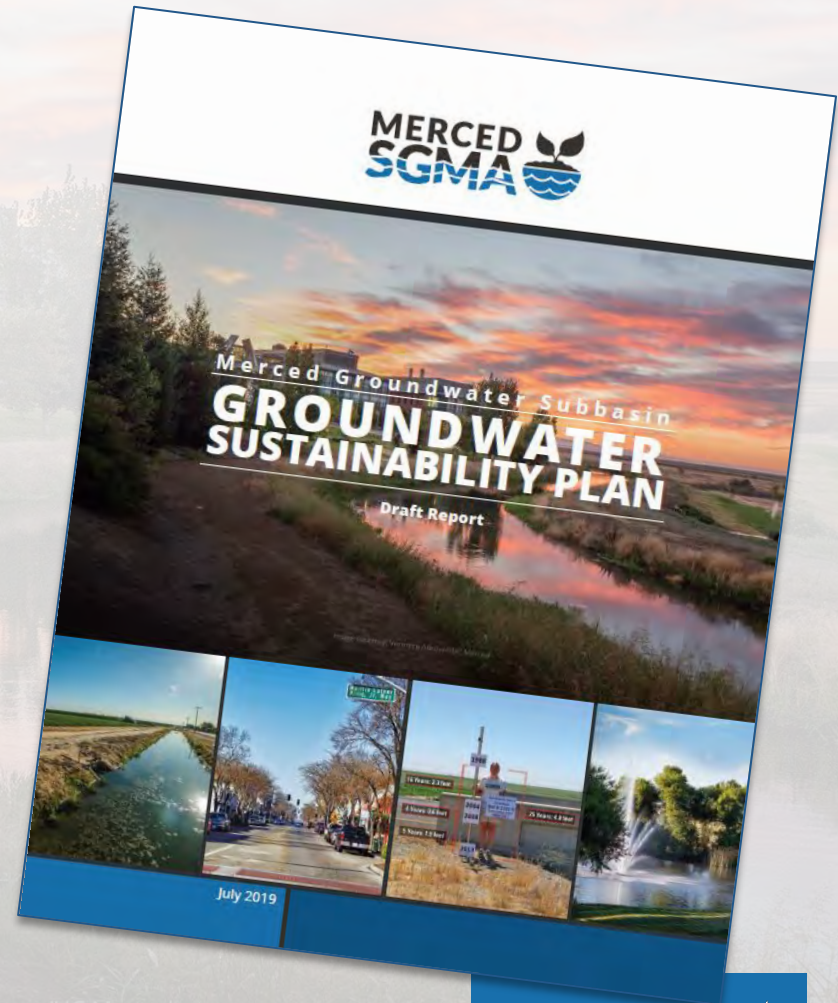


Image courtesy: Veronica Adrover/UC Merced

# First Year Implementation Priority Items from 10/29/19 CC meeting

- Create a Data Gaps plan
- Address Data Gaps
- Pursue funding opportunities
- Establish groundwater pumping monitoring and reporting program
- ✓ ■ Preparation of First Annual Report – due April 1, 2020
  - GSP Program Management (CC/SC coordination, outreach)
  - Collect and analyze water level, water quality, and subsidence data
  - Develop methodology for establishing minimum thresholds at new wells
  - Finalize allocation framework and implementation plan

Prop 68  
Planning  
Grant

Image courtesy: Veronica Adover/UC Merced



# Severely Disadvantaged Communities Grant Status Update

- The 3 GSAs in the Merced Groundwater Subbasin have collectively assigned MID as their representative for purposes of pursuing funding for projects that benefit implementation of SGMA locally.
  - MID board approved resolution 2017-47, **authorizing MID's assumption of this task.**
- Merced Groundwater Subbasin awarded \$2.4M grant under the 2017 Proposition 1 Sustainable Groundwater Planning (SGWP) Grant.
  - \$1.5M toward development of the GSP.
  - \$900K toward projects located within Severely Disadvantaged Communities (SDAC)

Image courtesy: Veronica Adrover/UC Merced

# Severely Disadvantaged Communities Grant Status Update

Planada Recharge Basin  
Pilot Project  
\$370K  
50% complete



El Nido Groundwater  
Monitoring Wells  
\$400K  
90% complete



Meadowbrook Water  
System Intertie Feasibility  
Study  
\$100K  
90% complete



Image courtesy: Veronica Adrover/UC Merced

# Projects Funded Under 2017 SGWP Grant:

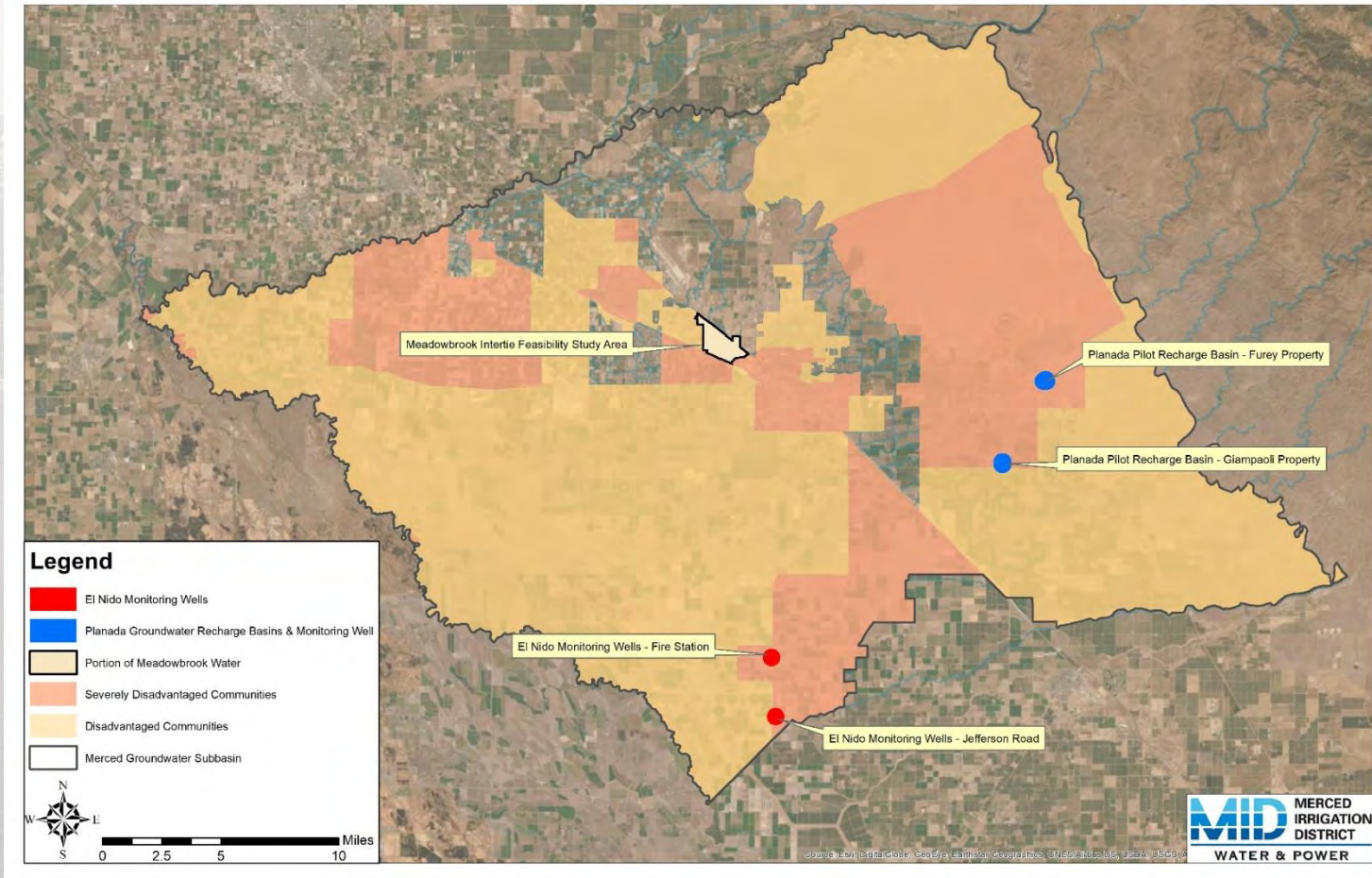


Image courtesy: Veronica Adrover/UC Merced

# Planada Groundwater Recharge Pilot Basin and Monitoring Well

- Proposed temporary pilot recharge basin.  
Over the course of 3 years, the project will monitor flows, evaporation, and recharge, while accounting for precipitation, into the recharge basin along with groundwater levels.
  - **Cone Penetration Tests to determine soil stratigraphy to depth of 100'** at two different sites (Giampaoli and Furey properties) did not show favorable geologic conditions for a recharge basin.
  - Pursuing alternative approaches to a traditional recharge basin, like installation of dry well(s).
- Proposed permanent monitoring well to be installed in the northeast corner of 067-050-011 (adjacent to Giampaoli Property)
  - Will provide groundwater elevation and quality information, as well as useful data about subsurface conditions in this area of the groundwater basin.
  - Drilling log may help identify stratigraphic units to target with a dry well.
  - Installed in September 2020

Image courtesy: Veronica Adrover/UC Merced

# Planada Groundwater Recharge Pilot Basin and Monitoring Well

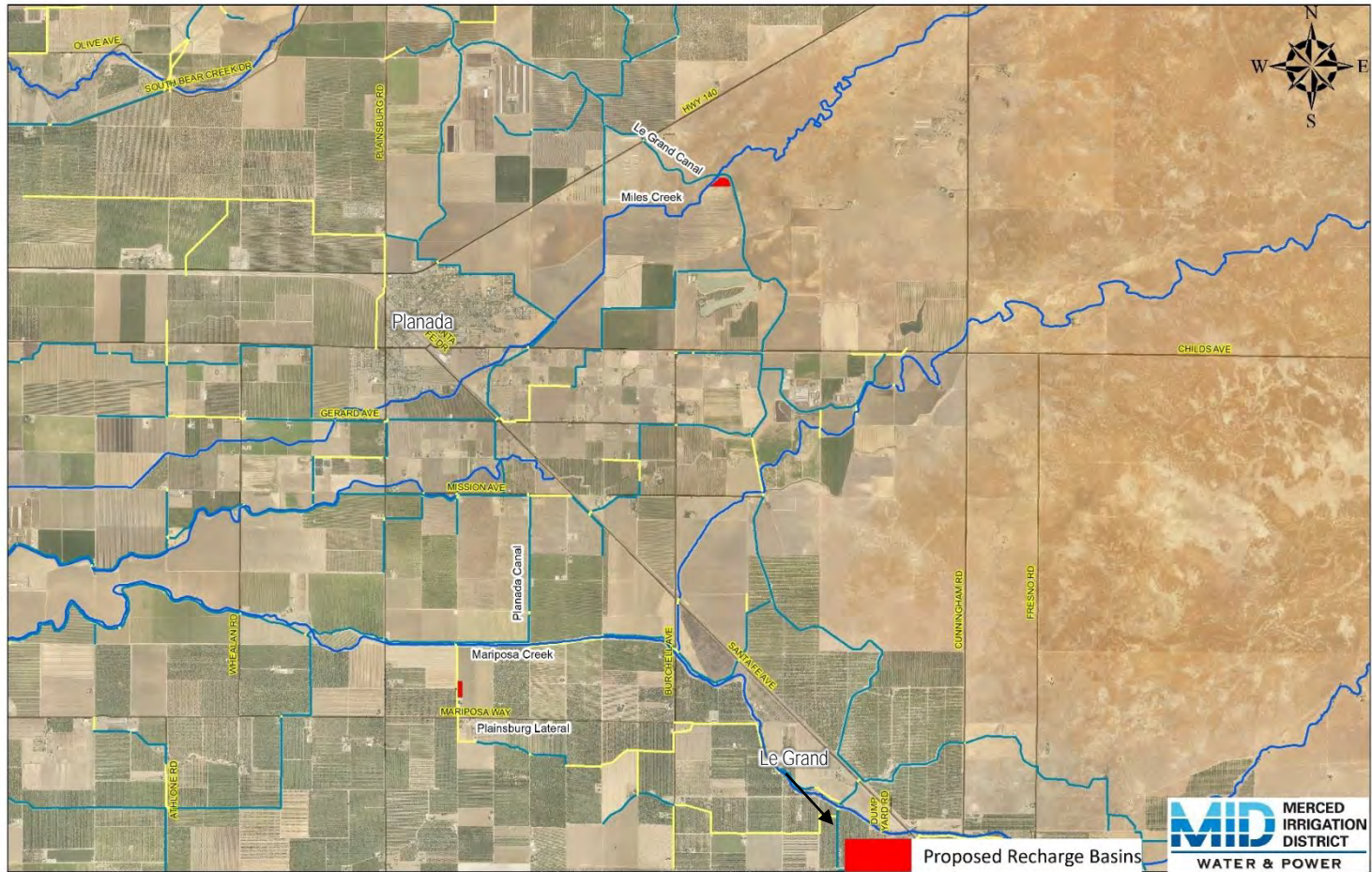


Image courtesy: Veronica Adrover/UC Merced

# El Nido Monitoring Wells

- Monitoring well assembly installed within a portion of APN 074-110-036—El Nido Fire Station 83.
- Monitoring well assembly installed within Merced County road right of way for **Jefferson Road, approx. 700' East of Hwy 59.**
- Both sites will provide groundwater elevation and quality information, as well as useful data about subsurface conditions in this area of the basin.



Image courtesy: Veronica Adrover/UC Merced

# El Nido Monitoring Wells

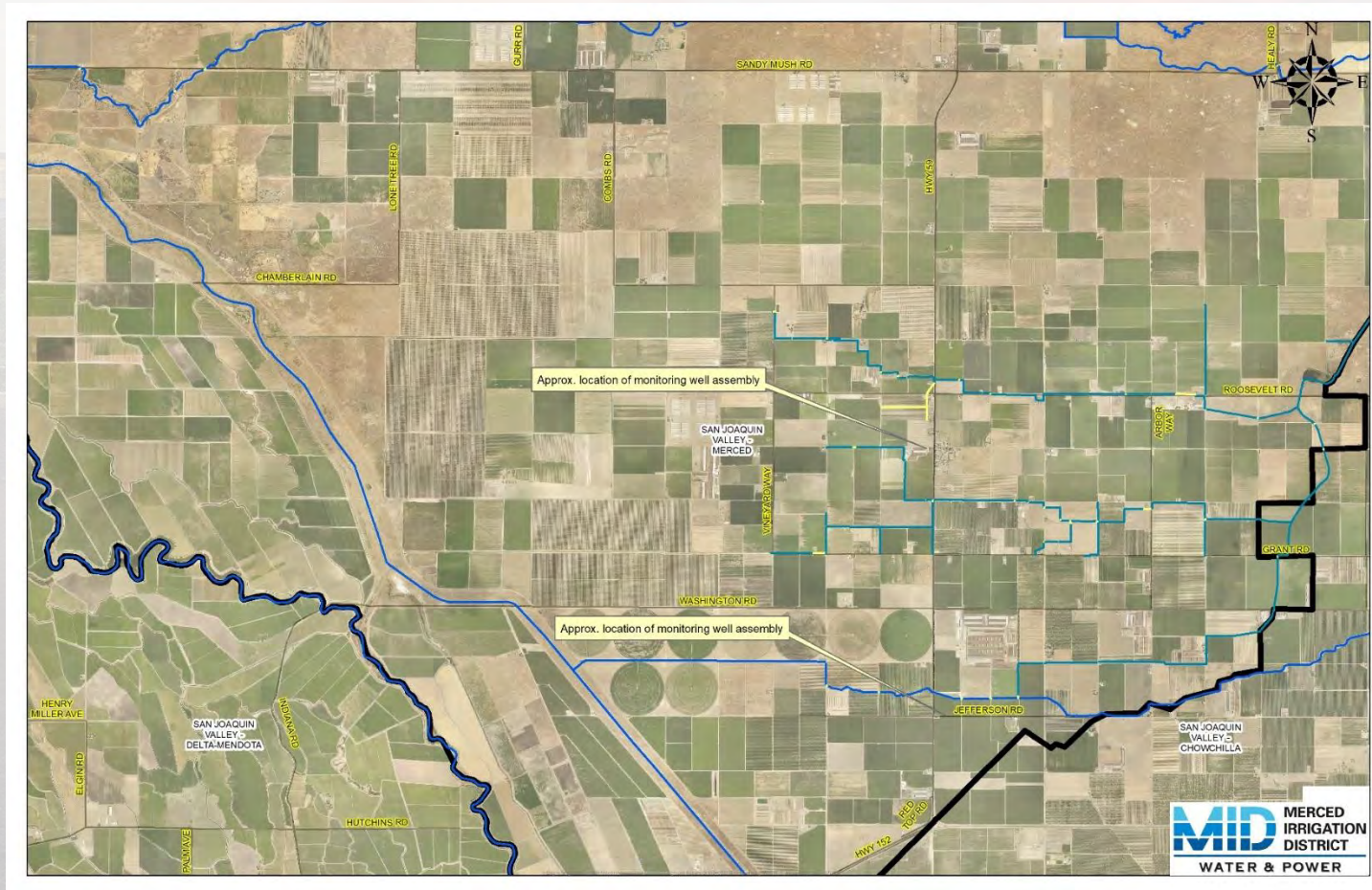


Image courtesy: Veronica Adrover/UC Merced

---

# Meadowbrook Intertie Feasibility Study

---

- Study of potential connections between the Meadowbrook Branch of California American Water, a private water company commonly known as **“Meadowbrook Water”** to the **City of Atwater** and **and/or the City of Merced** potable water systems.
- Meadowbrook Water is located in the Franklin-Beachwood area, a SDAC.
- Will aid in preparation for conditions, such as those witnessed by the Merced Groundwater Basin in 2015.
- Draft technical memorandum discussing system capacities, potential tie-in locations, and estimated costs, were presented at public workshops.

Image courtesy: Veronica Adrover/UC Merced



# Meadowbrook Intertie Feasibility Study

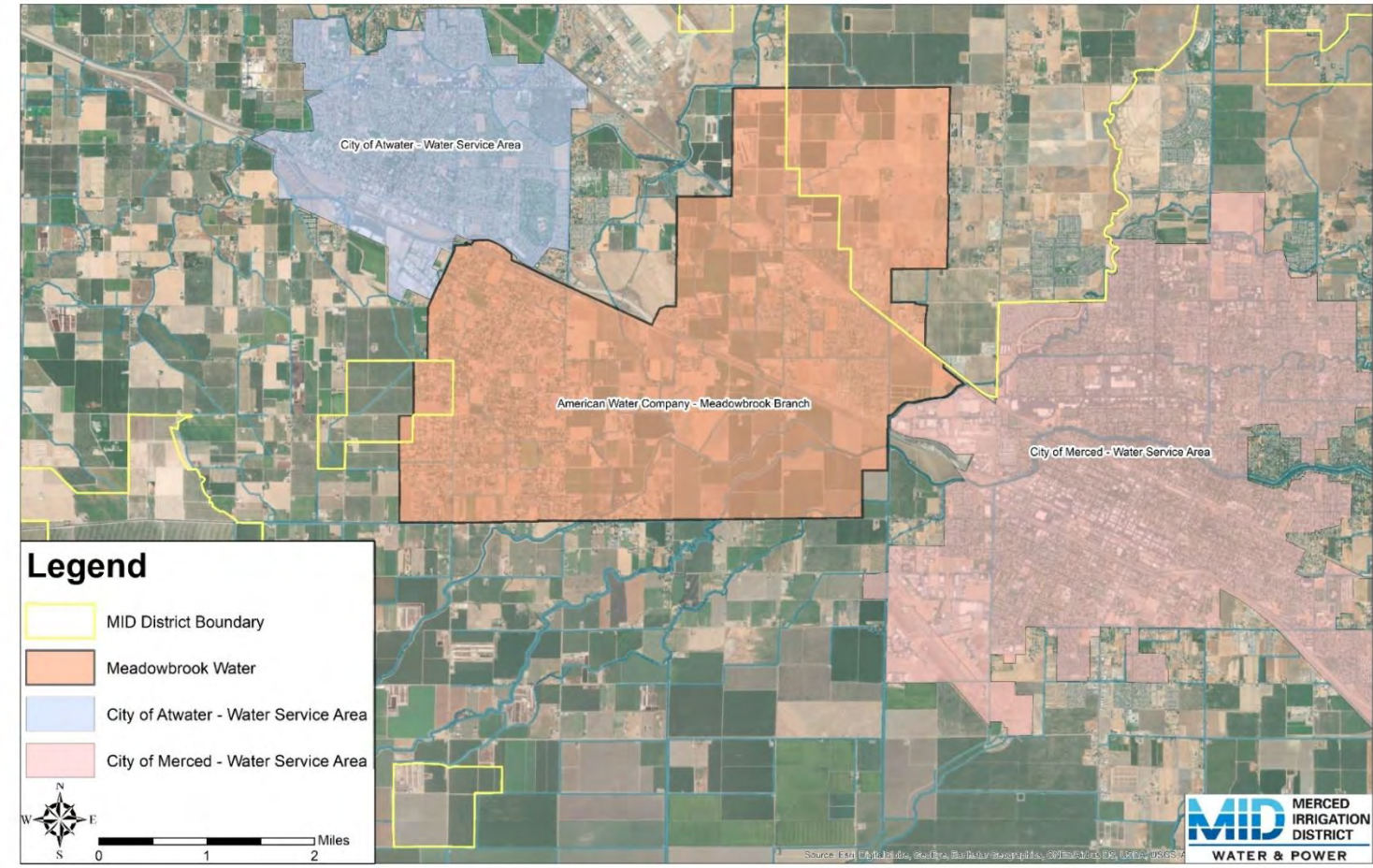


Image courtesy: Veronica Adrover/UC Merced



# Meadowbrook Intertie Feasibility Study – Public Workshops

- Two public workshops held:

Monday October 19, 2020	Wednesday October 21, 2020
6 p.m. to 8 p.m.	6 p.m. to 8 p.m.
Virtual via Microsoft Teams Live	Virtual via Microsoft Teams Live

- Please visit <http://mercedsgma.org/meetings> for meeting materials, draft technical memorandum and additional information.

Image courtesy: Veronica Adrover/UC Merced

# Meadowbrook Intertie Feasibility Study – 30 Day Public Comment Period

- 30-day public comment period will commence October 21, 2020 following **the close of that days' Public Workshop.**
- Written comments regarding the study must be received no later than 5:00 p.m. on Friday November 20, 2020.
- Written comments must be addressed to:

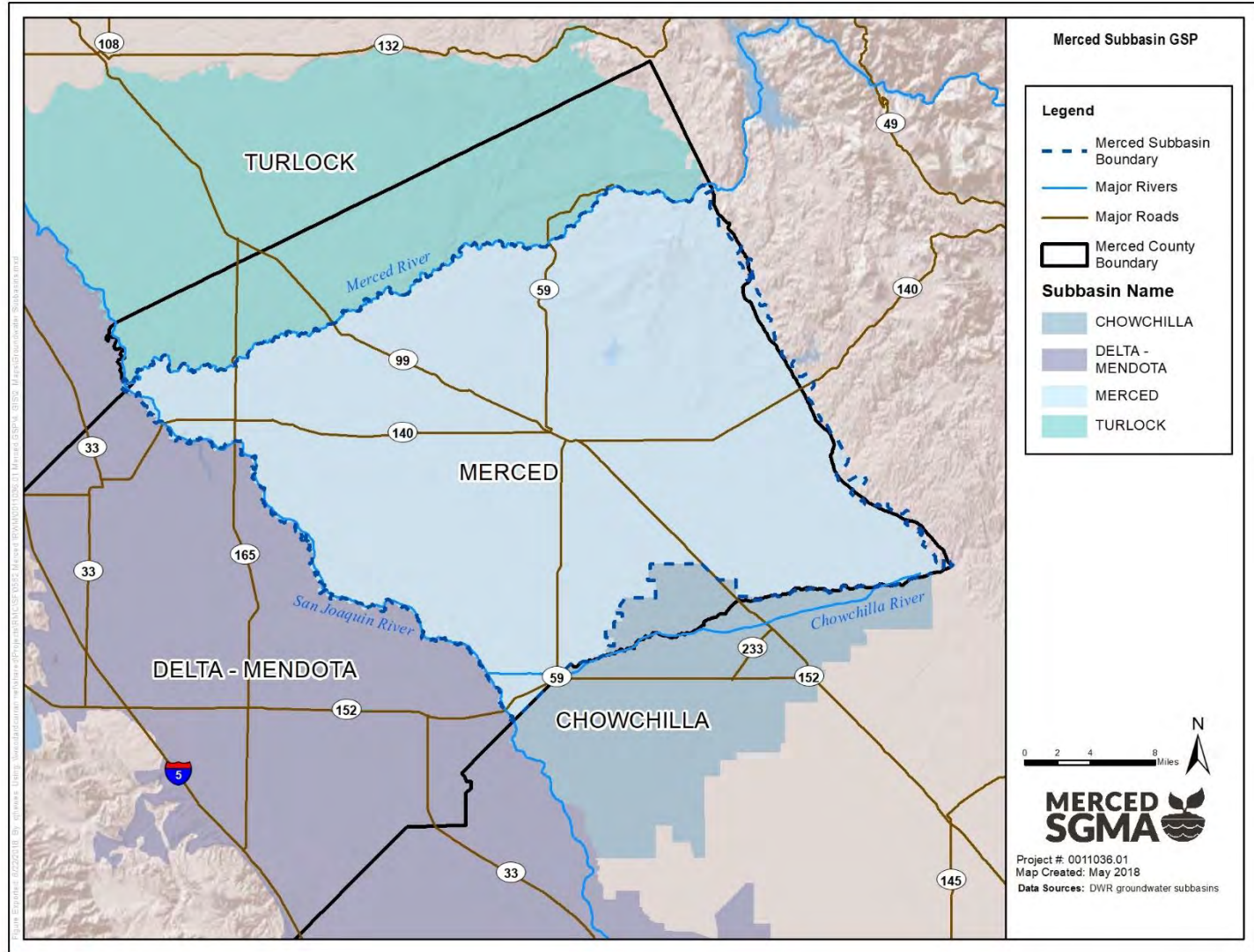
Merced Irrigation-Urban GSA

P.O. Box 818

Merced, CA 95340

Image courtesy: Veronica Adrover/UC Merced

# Coordination with Neighboring Basins



---

# GSA Reports

---

- Updates from each GSA on activities they are undertaking in their own jurisdiction:
  - Merced Subbasin GSA
  - MIUGSA
  - Turner Island Water District GSA #1

Image courtesy: Veronica Adrover/UC Merced



---

# Actions

---

Image courtesy: Veronica Adrover/UC Merced

# Water Level and Water Quality Monitoring Networks

- Historical Monitoring
  - Existing groundwater elevation and water quality monitoring program
  - CASGEM well reporting
  - Potential cost share and reimbursement mechanism
- Current and Future Monitoring
  - Monitoring requirements in GSP for water quality and water level
  - Data Management System and next steps
  - Processes, costs, and potential cost-share options
  - ACTION: Direct a GSA, or a member agency thereof, to prepare and issue a Request for Qualifications (RFQ) for the purpose of hiring one or more firms to conduct groundwater elevation monitoring, data compilation, reporting, general monitoring site maintenance, and other associated activities as needed.

Image courtesy: Veronica Adrover/UC Merced

# MAGPI – Merced Area Groundwater Pool Interests

- Formed in 1997 – 15 Member Agencies
- Protect health of the Merced Groundwater Basin
- Provide technical data and management strategies

<http://www.magpi-gw.org/>

Image courtesy: Veronica Adrover/UC Merced



---

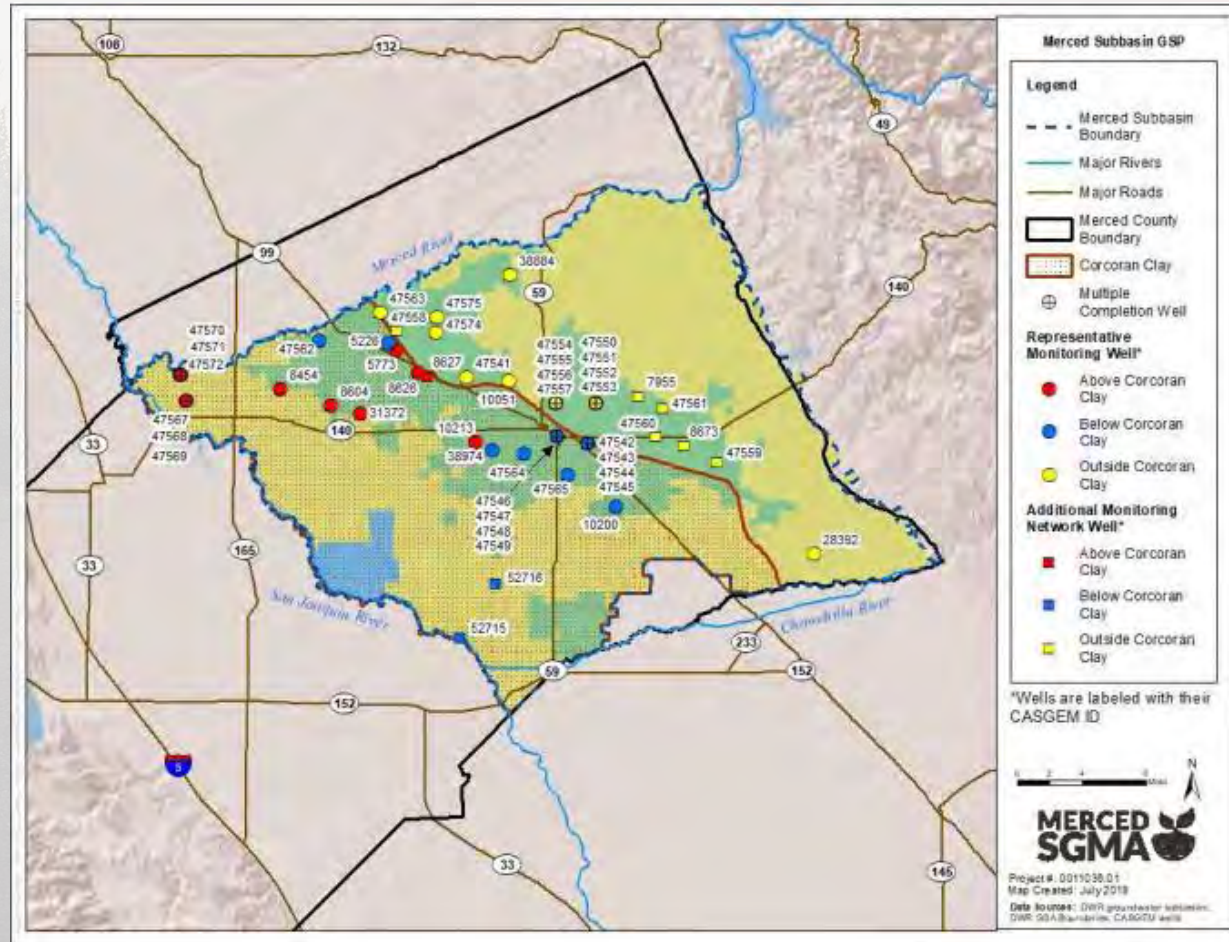
# CASGEM Transition to SGMA

---

- GSP monitoring network development evaluated existing available data and monitoring in the Merced Subbasin **GSP monitoring network includes 50 unique well ID's**, of which 24 are representative monitoring wells.
  - All wells required for CASGEM were transferred to SGMA Portal
- GSP states: “**Monitoring will occur** on or near the second week of **each month**...with re-assessment of the frequency at the 5-year update, or sooner, if needed.”

Image courtesy: Veronica Adrover/UC Merced

# SGMA Groundwater Level Monitoring Network



Majority of groundwater level monitoring network is located within MIUGSA Boundary

Image courtesy: Veronica Adover/UC Merced

# Groundwater Quality Monitoring

- GSP monitoring network development identified wells useful for needs of GSP and are actively monitored for other purposes.
- GSAs to coordinate with ESJWQC and various public water systems for water quality data.

Category	Principal Aquifer				Total Wells
	Above Corcoran Clay	Below Corcoran Clay	Outside Corcoran Clay	Unknown	
ESJWQC GQTM Principal Wells	0	3	2	0	5
ESJWQC GQTM Complementary Wells	3	2	7	2	14
Other PWS Wells	0	0	122	143	265
<b>Total</b>	<b>3</b>	<b>5</b>	<b>131</b>	<b>145</b>	<b>284</b>

Image courtesy: Veronica Adrover/UC Merced

# Groundwater Quality Monitoring

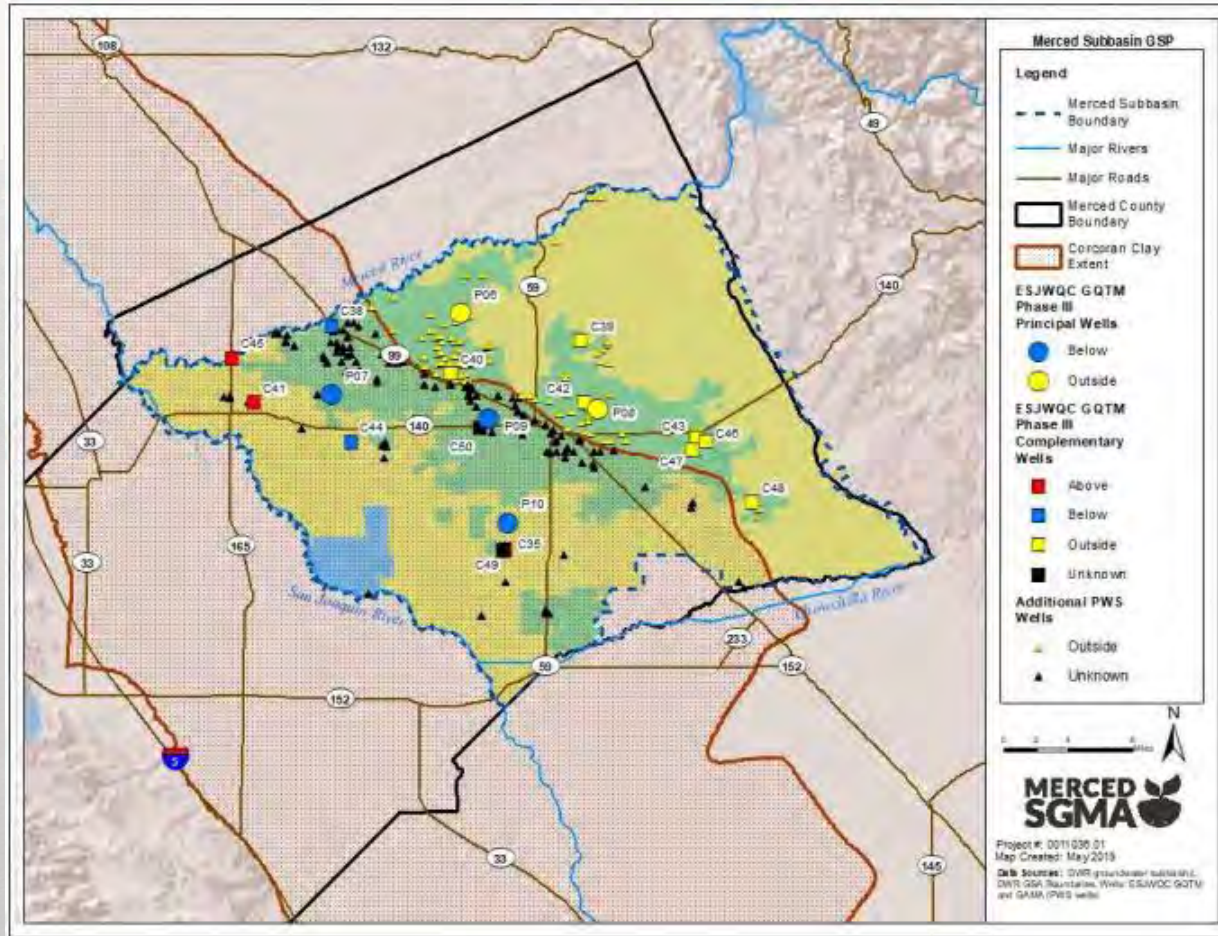


Image courtesy: Veronica Adrover/UC Merced

# Monitoring Summary

- **Groundwater Levels:**
  - CASGEM wells are now monitored for GSP monitoring network.
    - DWR would like to know if Merced Subbasin is going to submit data on Voluntary wells (no requirement).
    - Recommendation – Discontinue reporting on Voluntary wells.
  - GSAs responsible for monitoring and submittal of groundwater levels across GSP monitoring network (currently).
- **Groundwater Quality**
  - Wells are typically monitored by other agencies/entities.
  - Monitoring wells installed under the 2017 SGWP Grant include conductivity sensors maintained by Merced GSAs.
- Other monitoring stations, as constructed (e.g. Subsidence, Weather Stations, etc.)

Image courtesy: Veronica Adrover/UC Merced

# Maintenance Summary

Station Type	Number	Field Visit Frequency	Collection Frequency	Field Maintenance Frequency
Monitoring Wells – Without Telemetry	46	Monthly	Monthly	None
Monitoring Wells – With Telemetry	7 (including SGWP Grant wells)	Semi-annual to annual	Flexible (Ex. 15 minute intervals)	As needed, typically annual
Weather Stations (automated)	6 (including 1 CIMIS)	3-4 weeks (during warm months) 5-6 weeks (during cooler months)	Hourly data	3-4 weeks (during warm months) 5-6 weeks (during cooler months)

Image courtesy: Veronica Adrover/UC Merced

---

# Recommendations for Monitoring:

---

- Authorize a GSA or a member agency to issue request for qualifications for the purpose of hiring one or more firms to conduct monitoring, data compilation, reporting, and general monitoring site maintenance.
- Use existing cost share between GSAs for reimbursement mechanism for completed to date and future monitoring work supporting GSP

Image courtesy: Veronica Adrover/UC Merced

---

# Proposition 68 Planning Grant

---

- Basin awarded a \$500,000 Prop 68 Planning Grant in early 2020
  - MID has contracted with DWR for the grant and is ready to begin work
  - Review work plan elements and timeline of grant
- ACTION: Direct a GSA, or a member agency thereof, to prepare and issue a Request for Qualifications (RFQ) for the purpose of hiring one or more firms to for well installation, well inspection, and other activities associated with Proposition 68 Grant Workplan.

Image courtesy: Veronica Adrover/UC Merced



# Merced Subbasin Grant Proposal Summary

Final deliverable due  
date: October 2022

## Component 2: Addressing GSP Data Gaps

- Develop plan to address gaps
- Upgrade & incorporate existing wells into network
- Install new well(s) in critical locations
- Stakeholder outreach

## Component 3: Develop Remote Sensing Decision Support Tool

- Develop a GIS-based tool that can utilize satellite-based evapotranspiration data to estimate net groundwater use
- Develop estimates of current and ongoing net groundwater use in the basin
- Create TM documenting tool, uses, and limitations
- Stakeholder Outreach

## Merced Subbasin GSP Development Project for Addressing Critical Data Gaps

**Project Goal:** to advance the development of the Merced Subbasin GSP by addressing critical data gaps related to groundwater monitoring and basin water use

### Project Objectives:

1. Prioritize data gaps
2. Increase the number of wells in the monitoring networks
3. Improve understanding of current groundwater use in the basin
4. Develop tool to quantify ongoing basin water use to support development of basin management actions
5. Engage stakeholders to participate in the SGMA process, data gathering, and prioritization

## Merced GSP

**GSP Goal:** to achieve sustainable groundwater management on a long-term average basis by increasing recharge and/or reducing groundwater pumping, while avoiding undesirable results

# Recommendation:

- Request scope from Woodard & Curran for:
  - Develop plan to address gaps.
  - Develop Remote Sensing Decision Support Tool
- Issue an RFQ for one or more consultants to:
  - Upgrade and incorporate existing wells
  - Install new well(s)

Image courtesy of



---

# Proposition 68 Implementation Discussion

---

- Proposition 68 Round 1
  - Solicitation Open: November 2020
  - Applicant Workshop: Early December 2020
  - Solicitation Close: Early January 2021

Image courtesy: Veronica Adrover/UC Merced

# Proposition 68 Implementation - Timeline

<b>Program Schedule and Key Dates</b>	
<b><i>Milestone or Activity</i></b>	<b><i>Tentative Schedule</i></b>
Draft PSP 45-Day Public Comment Period	July 31, 2020 - September 18, 2020
Public Meeting via GoTo Meeting Webinar	September 3, 2020 at 10:00 a.m., PDT
Final 2020 PSP posted to public	November 2020
Round 1 Grant Solicitation Opens	November 16, 2020
Round 1 Application Workshop	December 2020
Round 1 Grant Solicitation Closes	January 2021
Public Review of Round 1 Draft Funding List	March 2021
Round 1 Final Awards	May 2021
Round 2 Grants Solicitation Opens	Springs 2022
Public Review of Round 2 Draft Funding List	Summer 2022
Round 2 Final Awards	Fall 2022

Image courtesy: Veronica Adrover/UC Merced

# Proposition 68 Implementation Round 1 – Funding

- \$21 million for COD basins
  - With requirements
- \$5 million for projects that solely benefit Underrepresented Communities (URCs) within a COD basin
  - With requirements
- **Grant award amounts:**
  - **Minimum Grant Amount - \$2 million per basin**
  - **Maximum Grant Amount - \$5 million per basin**

Image courtesy: Veronica Adrover/UC Merced

# Proposition 68 Implementation Round 1 – Local Cost Share

- A minimum match of 25 percent (%) of the project cost as local cost share is required.
- Cost share waiver available:

TABLE 1 – ELIGIBILITY FOR COST SHARE WAIVER

<b>0% Local Cost Share:</b>	The Project is located within an URC and solely benefits the URC
<b>5% Local Cost Share:</b>	The Project is not located within an URC, but solely benefits the URC
<b>15% Local Cost Share:</b>	The Project is not located within an URC, but a minimum of 50% of the project benefits the URC
<b>25% Local Cost Share:</b>	The Project is not located within an URC and does not benefit an URC

NOTE: The minimum local cost share is calculated based upon the total project cost. For this program, the total project cost is the grant funds plus the local cost share amounts. To calculate the local cost share percent: local cost share/ (grant funds + local project cost).

Image courtesy: Veronica Adrover/UC Merced

# Proposition 68 Implementation Round 1 – Underrepresented Communities (URCs)

- A DAC, SDAC, and EDA (as defined in the 2019 Prop 68 SGM Guidelines);
- Tribal Lands/Tribes (as defined in the 2019 Guidelines);
- California Communities Environmental Health Screening Tool (CalEnviroScreen 3.0) Classified DACs (Environmentally Disadvantaged Communities or EnvDACs)\*;
- and Fringe Communities\*\*.

\*CalEPA developed a [mapping tool](#) that assess environmental, health, and socioeconomic indicators to produce a score for each census tract in the State. CalEPA designates the top 25% scoring census tracts as EnvDACs. CalEPA designates the top 25% scoring census tracts as EnvDACs.

\*\*A Fringe Community are those communities that do not meet the established DAC, SDAC, and EDA definitions, but can show that they score in the top 25% of either the Pollution Burden or Population Characteristics score.

Image courtesy: Veronica Adrover/UC Merced

# Proposition 68 Implementation Round 1 – Eligibility

- Applicants:
  - GSAs or member agencies of the GSAs within a critically-overdrafted basin that have an adopted GSP that has been submitted to DWR for review and has been deemed complete by DWR.
- Projects:
  - Service/Project are must be within the DWR Bulletin 118 Basin

**Only one application will be accepted per basin.**

Image courtesy: Veronica Adrover/UC Merced



# Proposition 68 Implementation Round 1 – Eligible Project Types

- **Eligible project types** for the SGM Implementation Grants must be consistent with the purpose of Proposition 68, Chapter 11.6, which **include activities and/or tasks that consist of the development of groundwater recharge projects with surface water, stormwater, recycled water, and other conjunctive use projects; and/or projects that prevent or clean up contamination of groundwater that serves as a source of drinking water (Public Resources Code § 80146(a)).** Other eligible project types are projects and programs that **support water supply reliability, water conservation, and water use efficiency and water banking, exchange, and reclamation.**

Image courtesy: Veronica Adrover/UC Merced

# Proposition 68 Implementation Round 1 – Eligible Project Types

- The Project or Component(s) must contain a minimum of two multiple benefits and should meet benefits of multiple planning documents (e.g., Stormwater Resource Plans (SWRP), Integrated Regional Water Management (IRWM) Plans, Draft Water Resiliency Portfolio, etc.). Multiple benefits include:
  - Addresses impacts of current and future droughts
  - Addresses climate change planning
  - Community involvement, engagement, and education
  - Decreased flood risk by reducing runoff rate and/or volume into rivers, lakes, or streams
  - Environmental protection and improvement
  - Habitat enhancement and/or creation
  - Stream or riparian enhancement and/or instream flow augmentation
  - Water Conservation
  - Water Supply Reliability
  - Wetland enhancement and/or creation

Image courtesy Veronica Adrover/UC Merced

# Proposition 68 Implementation Round 1 – Eligible Project Examples

- Groundwater recharge projects with surface water, stormwater, recycled water, and other conjunctive use projects
- Groundwater contaminant remediation or prevention projects for groundwater that serves as a source of drinking water
- Construction, rehabilitation, or expansion of conveyance facilities for groundwater recharge projects
- Wastewater treatment and water recycling facility upgrades for groundwater recharge project sources
- Stormwater and runoff capture projects that support groundwater recharge
- Groundwater recharge facility expansion
- Groundwater recharge projects that address GDEs
- Projects and programs that support water supply reliability, water conservation, water use efficiency and water banking, exchange, and reclamation.

Image courtesy: Veronica Hoover UC Merced

# Proposition 68 Implementation Round 1 – Recommendation

- Request W&C to prepare scope for preparing grant application
- Engage with Stakeholders to select most likely projects to compete for the limited funds.
  
- **Discussion?**

Image courtesy: Veronica Adrover/UC Merced

# DWR Technical Support Services General Application

- Provide summary of desired goals and outcome of TSS
- ACTION: Assign Groundwater Subbasin Coordinator to finalize and submit DWR Technical Support Services application and associated materials requesting various field activities. Application and submittal are subject to subsequent coordination among the GSAs.

Image courtesy: Veronica Adrover/UC Merced

---

# DWR Technical Support Services

---

- **DWR TSS Services Offered:**
  - **Field Activities:**
    - **Monitoring Well Installation**
      - Geophysical Logging
      - Geologic Logging
    - **Groundwater Level Monitoring Training**
    - **Borehole Video Logging**
    - **Other Field Activities**
  - **Modeling and Mapping**
    - **Modeling Training and Support (pending DWR updated model release)**

Image courtesy: Veronica Adrover/UC Merced

---

# Action:

---

- Assign Groundwater Subbasin Coordinator to finalize and submit DWR Technical Support Services application and associated materials requesting various field activities. Application and submittal are subject to subsequent coordination among the GSAs.

Image courtesy: Veronica Adrover/UC Merced



---

# Questions/Comments from Public

---

Image courtesy: Veronica Adrover/UC Merced







---

# Informational Items

---

Image courtesy: Veronica Adrover/UC Merced

---

# Domestic Well Inventory

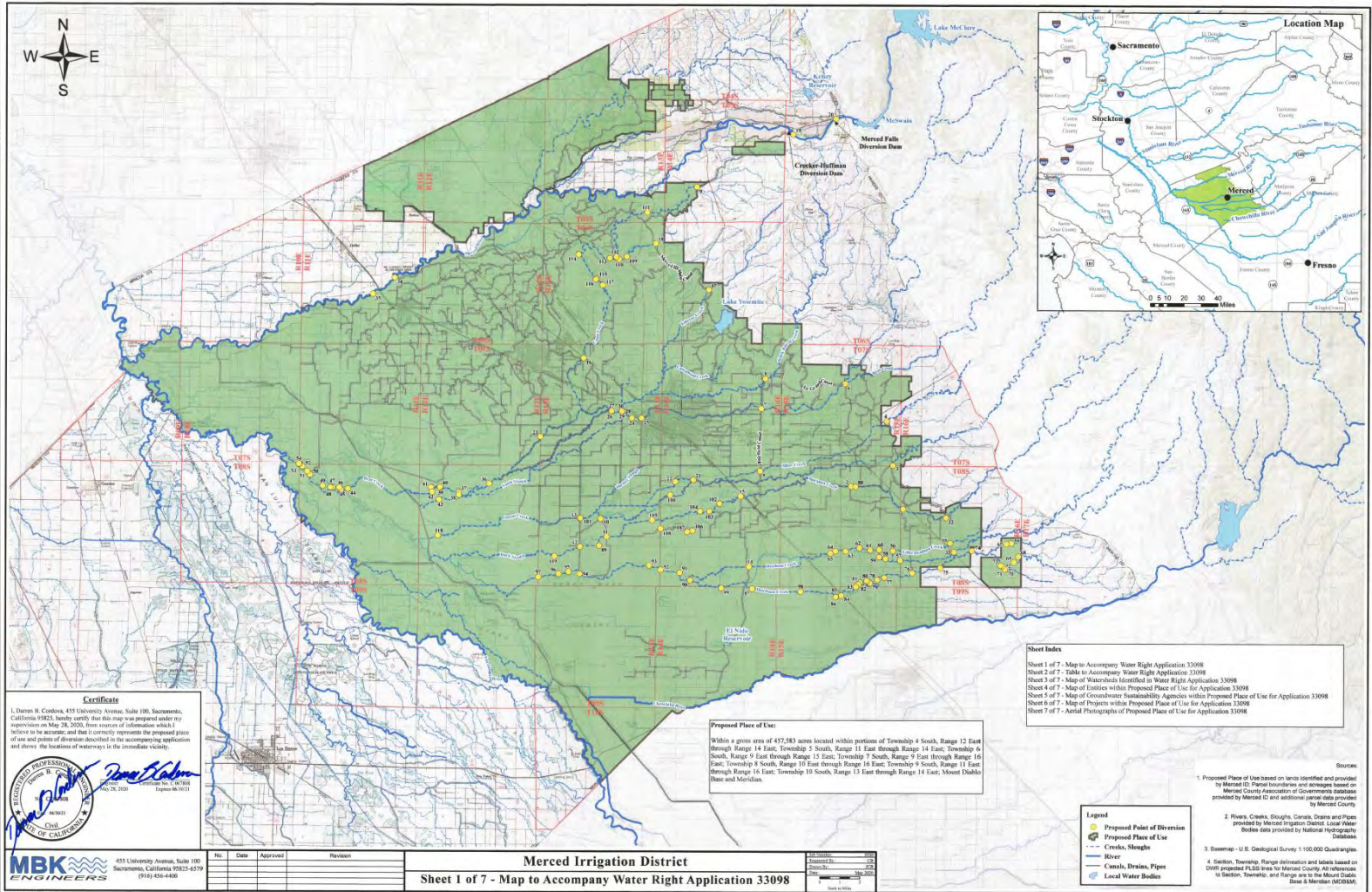
---

- Technical assessment underway to help Merced Integrated Regional Water Management Authority identify locations and areas within the Merced IRWM Region where properties are likely served by private domestic wells and may need further verification of well location and construction details:
  - Collecting information from Merced County well permitting database and DWR's OSWCR system
  - Data screening and filtering, using multiple data sources to evaluate and filter locations
  - Develop GIS database

Results will be especially helpful for Merced GSP

Image courtesy: Veronica Adrover/UC Merced

# Coordinated Water Right Application



---

# Other Informational Items

---

- Discussion

Image courtesy: Veronica Adrover/UC Merced



---

# Next Steps

---

Image courtesy: Veronica Adrover/UC Merced

---

# What's coming up next?

---

- Meeting frequency for Coordination Committee and Stakeholder Committee
- Adjourn to next meeting: not currently scheduled

Image courtesy: Veronica Adrover/UC Merced

---

# GSP Coordination Committee

---

Coordination Committee Meeting – November 2, 2020

Merced Irrigation-Urban GSA  
Merced Subbasin GSA  
Turner Island Water District GSA-1

Image courtesy: Veronica Adrover/UC Merced

