

---

# Coordination in the Merced Subbasin

---

DWR GSA Forum- March 21, 2019

Image courtesy: Veronica Adrover/UC Merced



# Merced Subbasin

- San Joaquin Valley basin
- High priority subbasin
- Designated in critical condition of overdraft

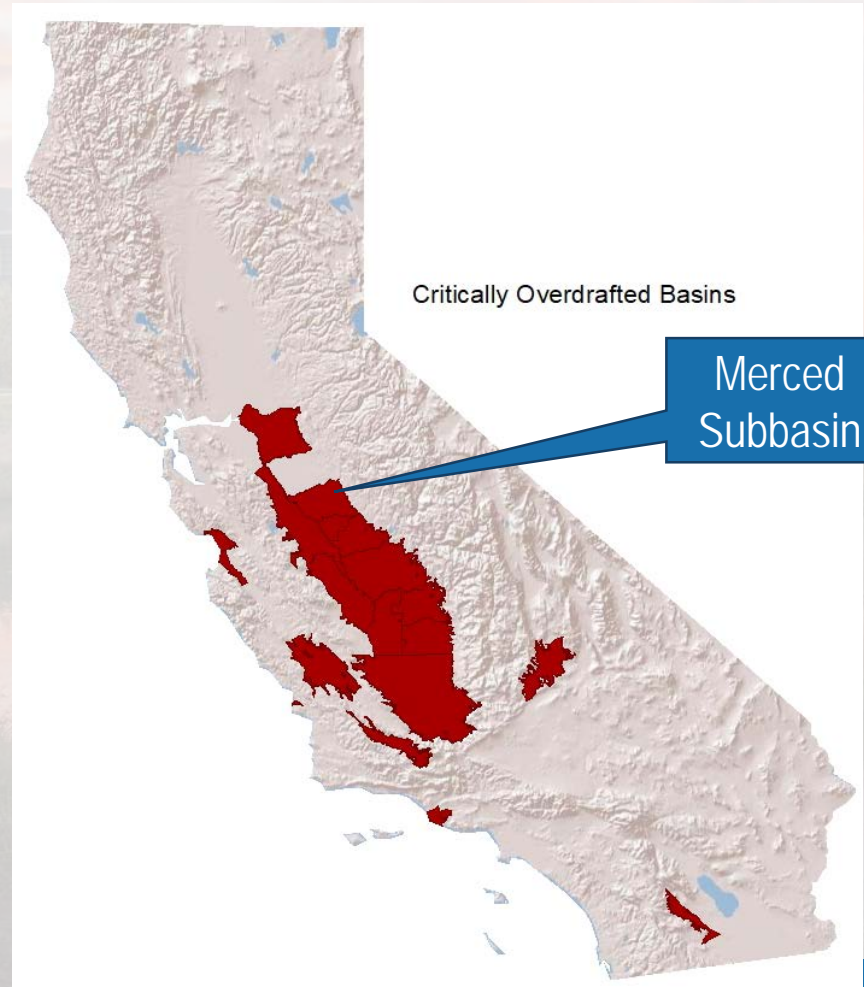


Image courtesy: Veronica Aulover/UC Merced

# Merced Subbasin Overview

Beneficial users of groundwater:

- Agriculture
- Urban
- Disadvantaged communities
- Refuges/duck clubs

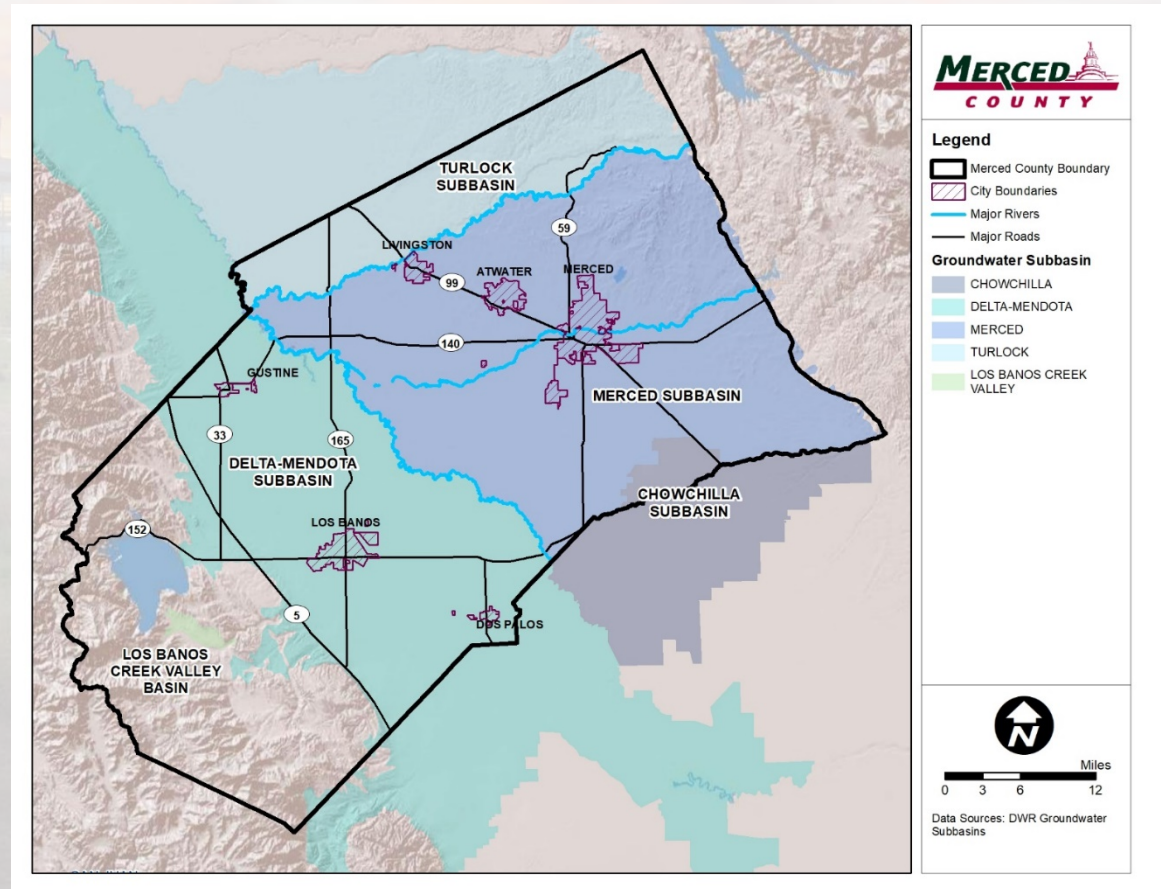


Image courtesy: Veronica Adrover/UC Merced

# Pre-SGMA Coordination

- Merced Area Groundwater Pool Interests (MAGPI)
- Merced Water Resources Model
- Merced Integrated Regional Water Management Authority (MIRWMA)
- Flood control – Merced Streams Group

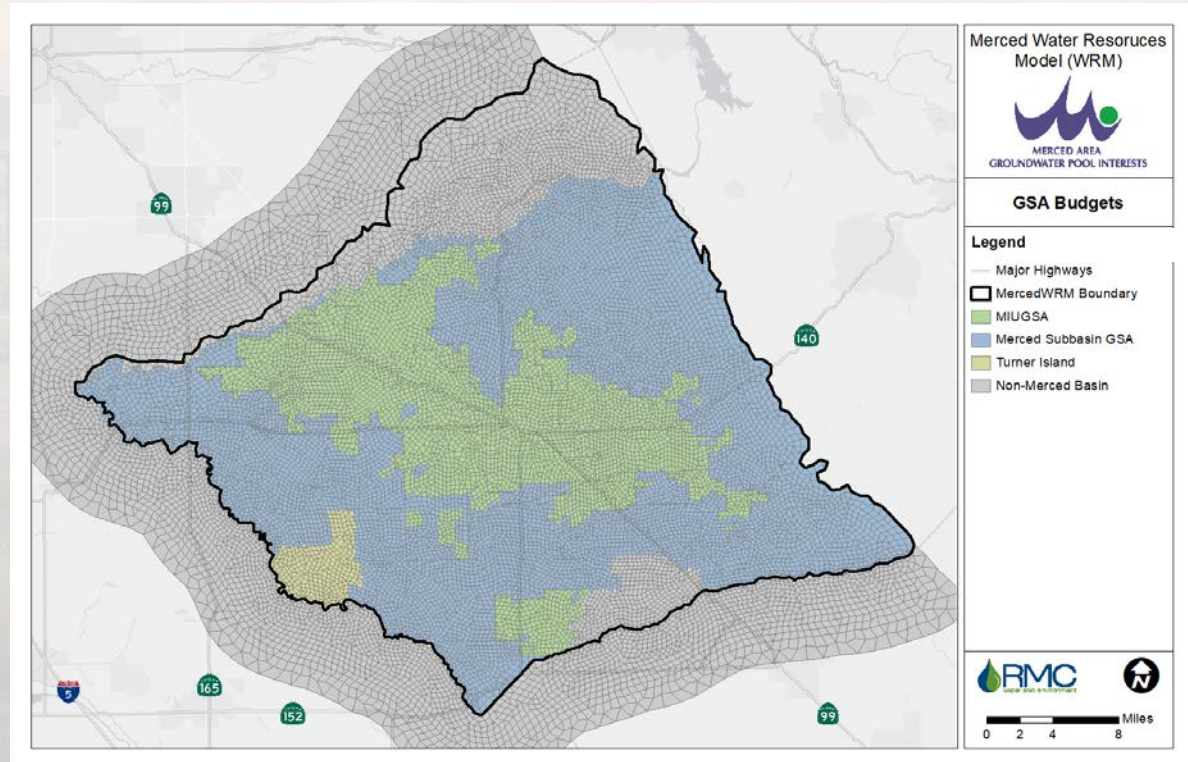
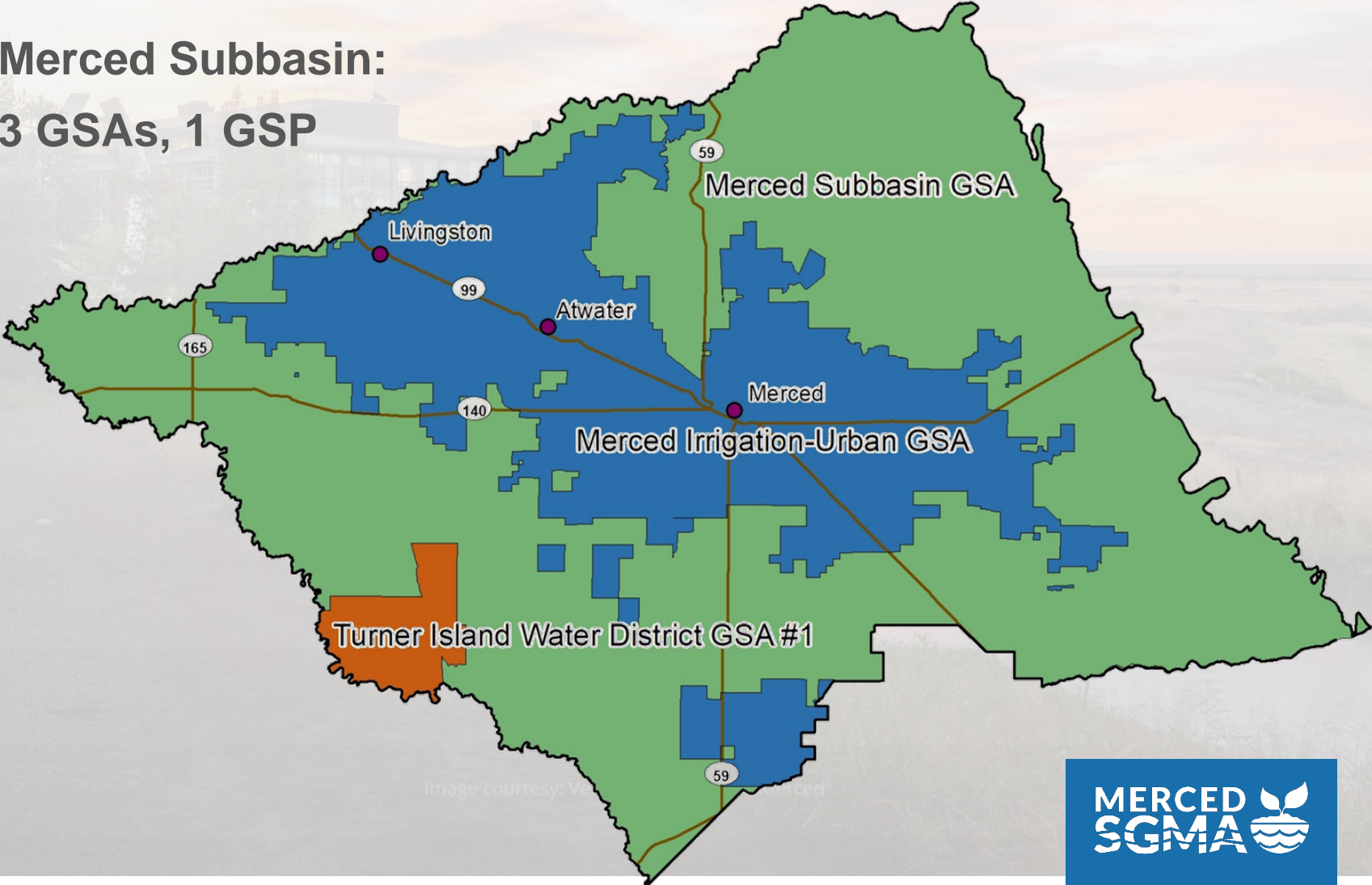


Image courtesy: Veronica Adrover/UC Merced

# Merced Subbasin GSAs

**Merced Subbasin:  
3 GSAs, 1 GSP**



# Merced Subbasin GSAs

- Merced Irrigation-Urban Groundwater Sustainability Agency
  - Merced Irrigation District
  - City of Merced
  - City of Atwater
  - City of Livingston
  - Planada Community Services District
  - Le Grand Community Services District
  - Winton Water & Sanitary District
- Merced Subbasin Groundwater Sustainability Agency
  - County of Merced
  - County of Mariposa
  - Stevinson Water District
  - Merquin County Water District
  - Le Grand-Athlone Water District
  - Plainsburg Irrigation District
  - Lone Tree Mutual Water Company
  - Sandy Mush Mutual Water Company
- Turner Island Water District Groundwater Sustainability Agency

Image courtesy: Veronica Adrov

---

# Coordination MOU

---

- Provides for coordination among the GSAs
- Structure for decision making
  - GSP development
  - Basin-wide projects
  - Sharing basin-wide costs.
- Formed the Coordination Committee for basin-wide recommendations
  - GSP consultant
  - Stakeholder Committee formation
  - GSP/Basin branding
  - Outreach

Image courtesy: Veronica Adrover/UC Merced

# Merced GSP Outreach Structure

- *GSA Leadership* – Overall authority for decision-making, GSP development, and implementation
- *Coordinating Committee* – Advise on plan development and make recommendations to decision-makers
- *Stakeholder Committee* – Represent diverse stakeholders in basin and provide input to inform plan development
- *Public workshops* – Building awareness and understanding; emphasis on engagement of DACs



Image courtesy: Veronica Adrover/UC Merced



---

# GSP Development Protocols

---

- Unanimous recommendations from the Coordination Committee
- Key decisions approved by GSA Boards
  - Stakeholder Committee members
  - Basin-wide water budget
  - Allocation framework
- Key decisions vetted through Stakeholder Committee, Coordination Committee and public workshops
- Joint GSA board meetings on GSP presentations from consultants

Image courtesy: Veronica Adrover/UC Merced

---

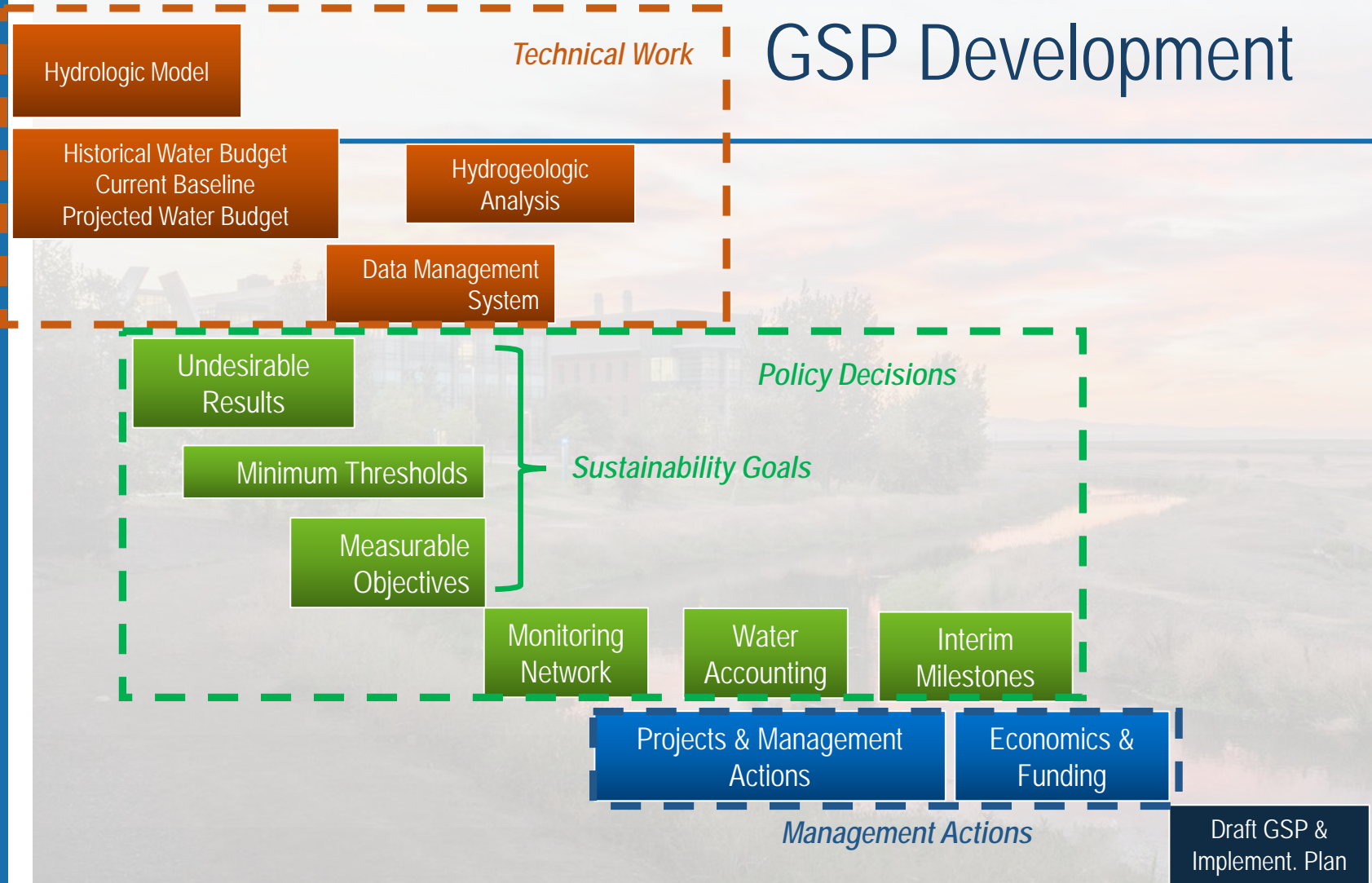
# Challenges

---

- Public outreach
  - Are we reaching each community in the basin?
- Education
  - Is everyone on the same page?
- Schedule
  - Good consensus building takes time

Image courtesy: Veronica Adrover/UC Merced

# GSP Development

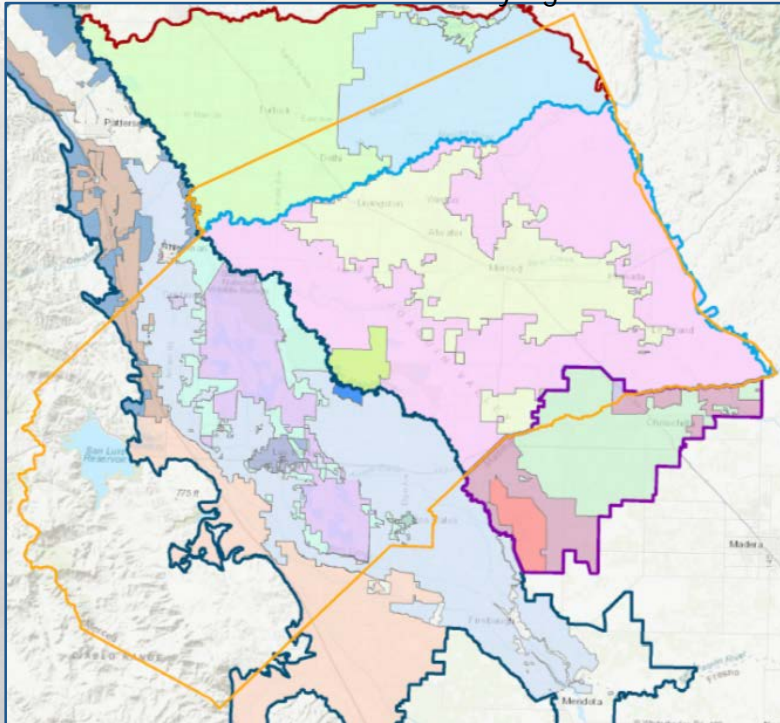


Jun 2018 Jul 2018 Aug 2018 Sep 2018 Oct 2018 Nov 2018 Dec 2018 Jan 2019 Feb 2019 Mar 2019 Apr 2019 May 2019 Jun 2019 Jul 2019

Image courtesy: Veronica Adrover/UC Merced

# Merced County's Role

Merced County  
Groundwater Sustainability Agencies



- Successful GSAs countywide
- Managing the unincorporated “white areas” within GSAs
- Groundwater Ordinance’s intersection with SGMA

Image courtesy: Veronica Adrover/UC Merced



---

Thank You!

---

Image courtesy: Veronica Adrover/UC Merced

